

**Warning:**

It is assumed the Master and all Slaves motors are mechanically coupled in order to prevent a runaway condition!

**NOTE 1:**  
ONLY THE MASTER'S SLV RELAY IS OPEN - ALL OTHER DRIVES SLV RELAYS MUST BE CLOSED.

**NOTE 2:**  
ALL SLAVE DRIVES' SLV AND RUN RELAYS SHOULD BE ENERGIZED BEFORE THE THE MASTER'S RUN RELAY IS CLOSED AND STAY ENERGIZED UNTIL THE MASTER'S RUN RELAY IS OPENED.

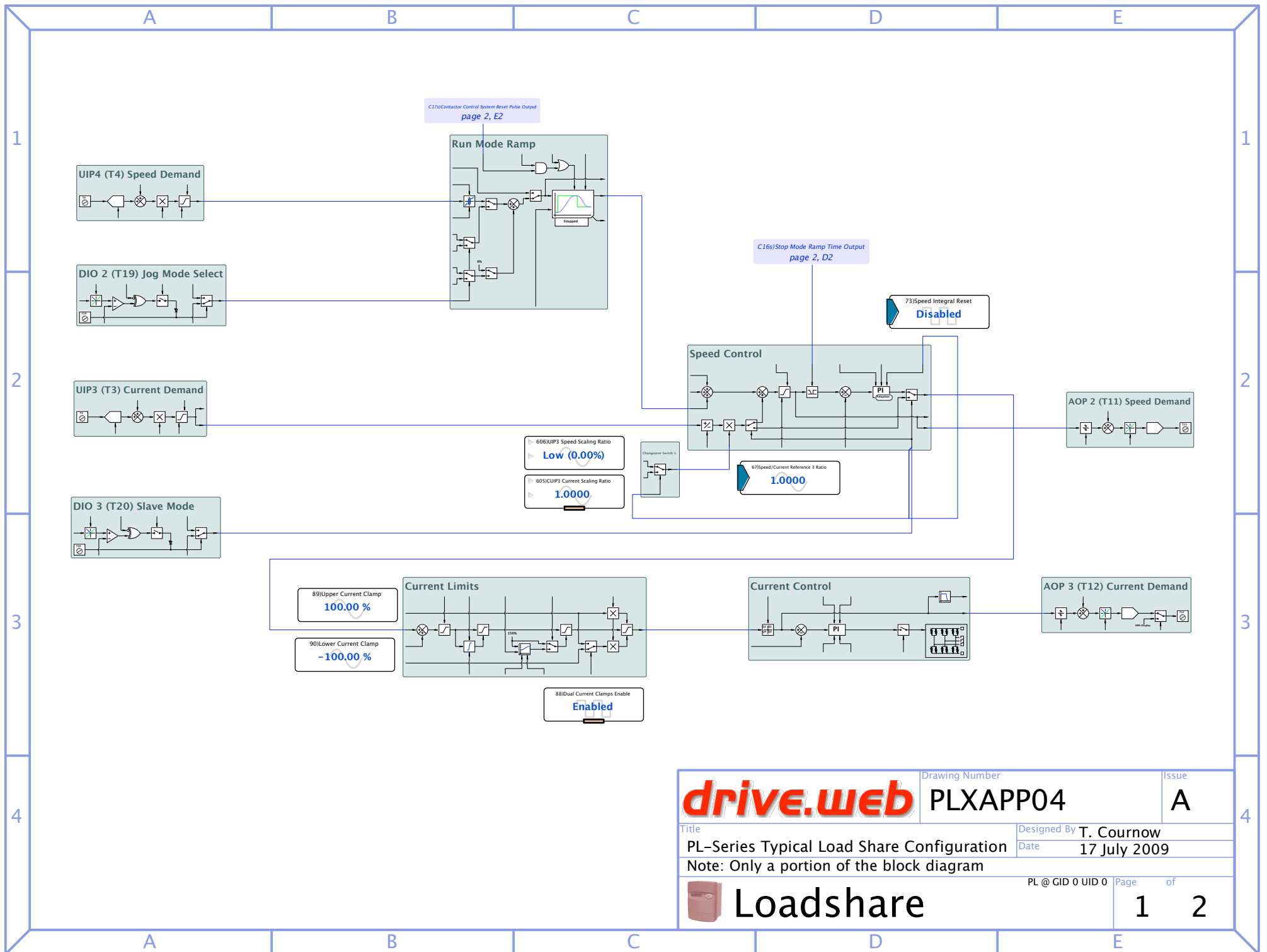
**NOTE 3:**  
IF T33 OPENS FOR ANY REASON, ALL DRIVES WILL STOP IN INDEPENDENT SPEED MODE WHICH MAY RESULT IN UNEVEN LOADSHARING (EVEN IF THE SLAVE MODE TERMINAL IS ENERGIZED).


ISS	DATE	APPROVED
A	17 JUL 09	T. COURNOW

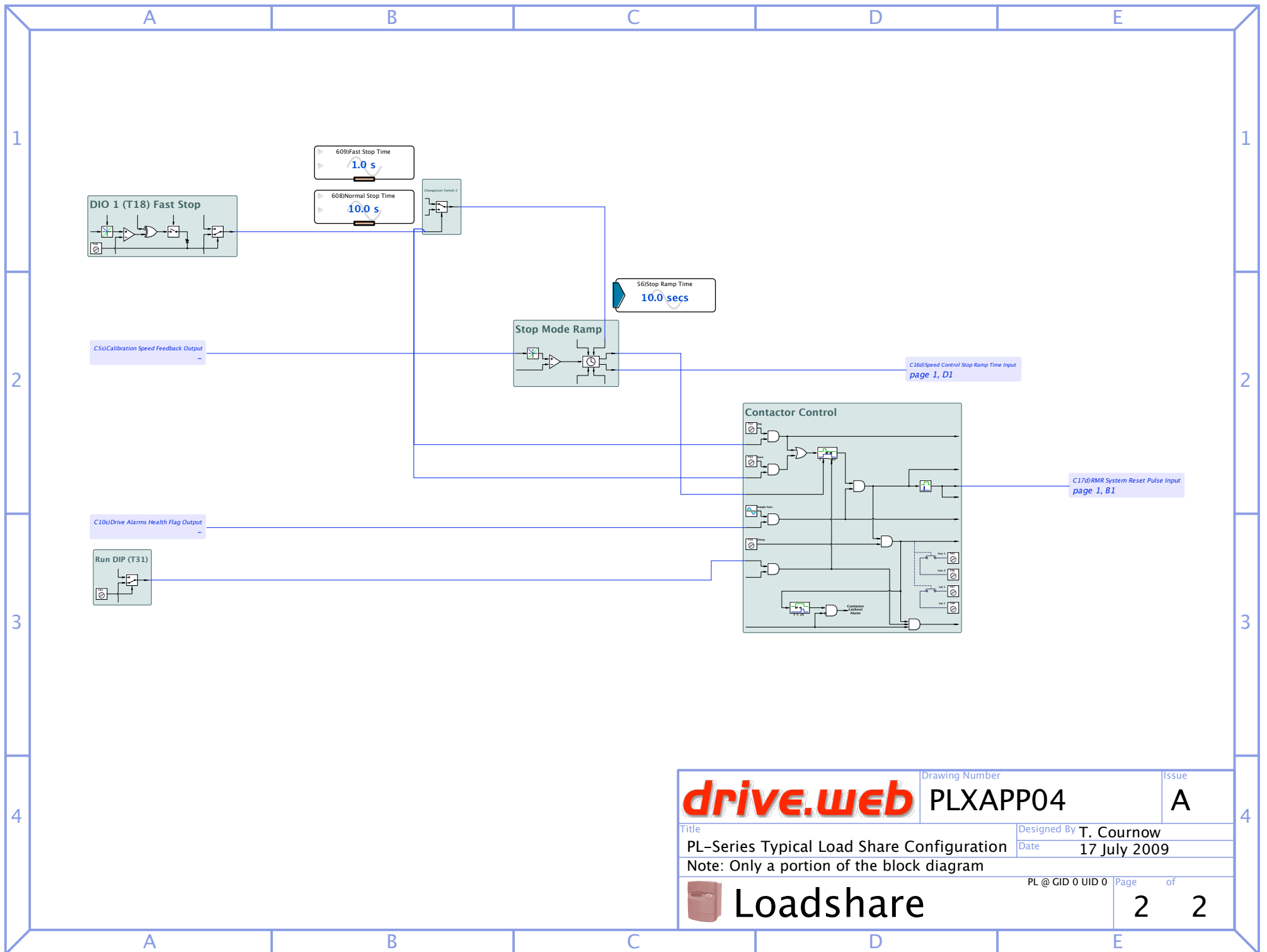
**Bardac**


40 Log Canoe Circle, Stevensville, MD 21666  
phone (410) 604-3400 fax: (410) 604-3500  
email: info@bardac.com

SHT. TITLE	PARTIAL WIRING DIAGRAM	CUST.	VARIOUS	DRN.	T. COURNOW	DWG. NO.	PLXAPP04
DWG. TYPE	PL-SERIES DC DRIVE LOAD SHARE SCHEME	DIST.	VARIOUS	DESIGN	DESIGN	DWG. ISS.	A
JOB TITLE	N/A	P.O.	N/A	SCALE	NONE	JOB NO.	N/A
LOCATION			VARIOUS	SIZE	SIZE	SHT.	1 OF 1



<b>drive.web</b>		Drawing Number	Issue
		<b>PLXAPP04</b>	<b>A</b>
Title		Designed By <b>T. Cournow</b>	
PL-Series Typical Load Share Configuration		Date <b>17 July 2009</b>	
Note: Only a portion of the block diagram			
 <b>Loadshare</b>		PL @ CID 0 UID 0 Page	of
		<b>1</b>	<b>2</b>



<b>drive.web</b>		Drawing Number	Issue
		<b>PLXAPP04</b>	<b>A</b>
Title		Designed By <b>T. Cournow</b>	
PL-Series Typical Load Share Configuration		Date <b>17 July 2009</b>	
Note: Only a portion of the block diagram			
 <b>Loadshare</b>		PL @ CID 0 UID 0	Page <b>2</b> of <b>2</b>