

drive.web application packs

WINDERS & UNWINDERS

smarty programmable controllers use the **drive.web** distributed control technology to bring easy, cost effective intelligence to high performance drive systems.

smarty application packs are pre-configured for common applications:

smarty dw210-1101

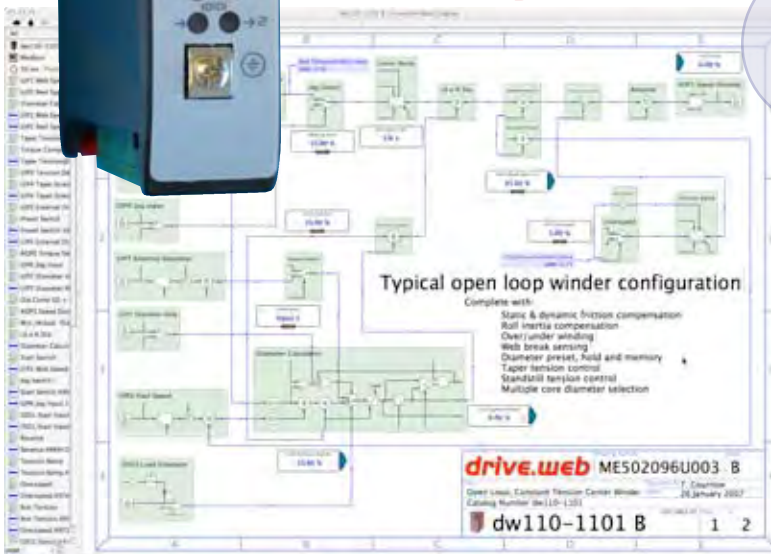
smarty dw210-1102

smarty dw210-1103

smarty dw210-1104

Open Loop Constant Tension Center Winder
Closed Loop Dancer Controlled Center Winder
Closed Loop Load Cell Controlled Center Winder
Closed Loop Slip Core Winder

To learn more about the **drive.web** control technology concepts download the FREE **drive.web savvy** configuration tools from www.driveweb.com and follow the getting started guides in the Help menu or join one of our weekly FREE online training seminars - it's easy!



These generic configurations can easily be edited by the intuitive **drive.web savvy** graphical tools to suit the particular application. The clear signal flow diagrams are stored in the controllers for reliable access in the field.

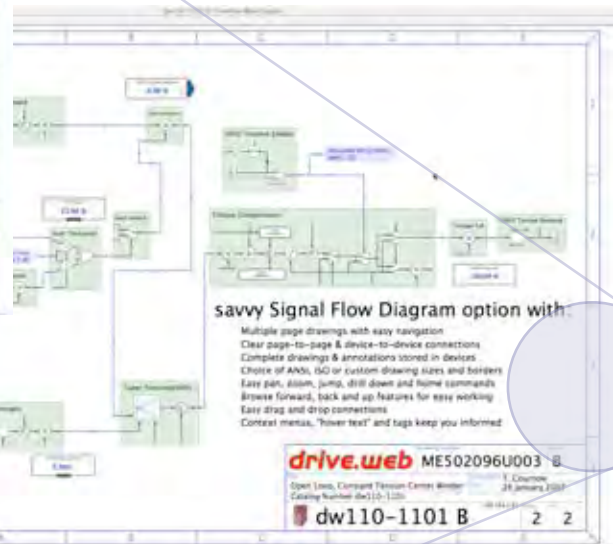
The basic **smarty** packages include 16 flexible analog/logic i/o in a small DIN rail mounting, Internet accessible unit (4.1" high, 4.8" deep, 0.9" wide) with 10/100baseTX Ethernet and plug-in terminals.

Standard features include:

- Fully editable configurations and drawings
- Process control and winder function block libraries
- Web break sensing
- Diameter memory, preset and hold
- Linear or hyperbolic taper tension
- Multiple core presets
- Integral reset
- Adaptive control for high speed systems
- Standstill tension mode
- Jog/run/slack take up modes
- Turret indexing mode
- Anti-reverse clamps
- Core speed matching

Optional features include:

- Over/under winding
- Line drive coordination
- Manual or auto-splicing modes
- Encoder inputs
- ModbusTCP/IP over Ethernet
- Serial communications
- ... and more.



drive.web

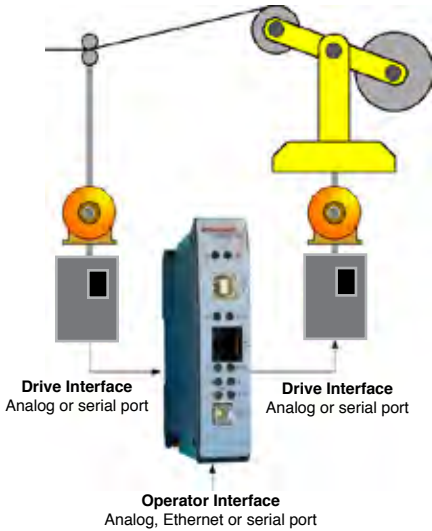
WEB HANDLING EXCELLENCE

smarty dw210-1101

OPEN LOOP CONSTANT TENSION CENTER WINDER

Special features include ...

- Static and dynamic friction compensation
- Inertia compensation
- Diameter calculation
- Torque compensation
- Torque demand range limits



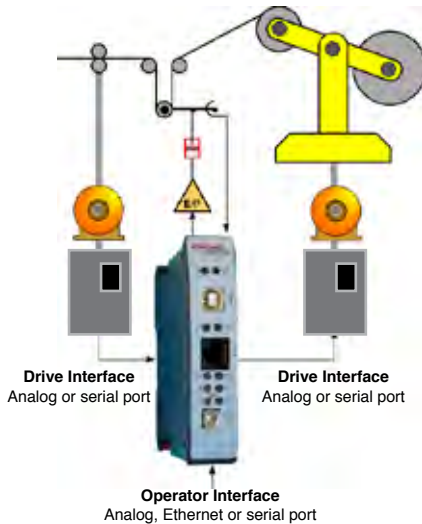
smarty application packs are very easy to interface to most line and winder drives, operator stations and PLCs over Ethernet, RS485 serial communications or via analog and logic wired connections

smarty dw210-1102

CLOSED LOOP DANCER CONTROLLED CENTER WINDER

Special features include ...

- Output for e/p (electrical-to-pressure) air valve control
- Diameter calculation or sensor input
- Optional loadcell input
- Dancer limit inputs
- Winder speed range limits



Try it out!

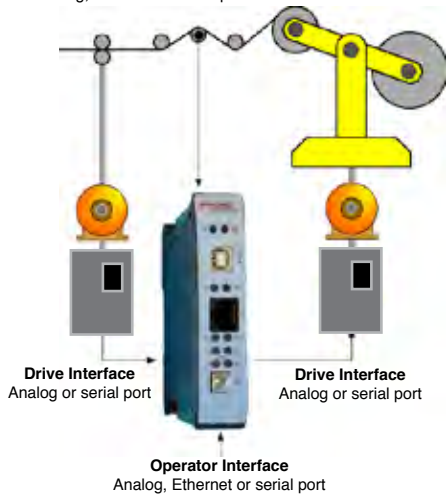
Download the **savvy** programming tools free from www.driveweb.com and edit the demo "phantom" controllers or create your own "phantoms"

smarty dw210-1103

CLOSED LOOP LOADCELL CONTROLLED CENTER WINDER

Special features include ...

- Loadcell input
- Diameter calculation or sensor input
- Winder speed range limits
- Loadcell high/low tension alarm outputs



smarty application pack options:

- ModbusTCP/IP slave over Ethernet
- ModbusRTU master or slave RS485 ports
- Single or dual encoder inputs with retransmit
- Math function block library (trig, exponential, log)
- Encoder control function block library

Other smarty application packs include:

- dw210-1105, Electronic Line Shaft/Registration
- dw210-1106, Coordinated Drive Line Master
- dw210-1107, Generic interface for analog drives

drive.web control technologies

www.driveweb.com

40 Log Canoe Circle, Stevensville, MD 21666 USA

Phone + 410-604-3400 Toll Free USA 1-888-667-7333 (1-888-ON SPEED)