

**Bardac
drives**

SERVICE MANUAL

Frame Size 3

240V - 480V

E3 Drives

Assembly/disassembly

IP20



Contents**Page no:**

Drive cover removal procedure	3
Fan disconnection	5
Heatsink removal	6

Drive cover removal procedure



Place the drive on a flat surface

Push to 2 x tabs inwards as highlighted opposite in red.



Place the drive on a flat surface

Push to 2 x tabs inwards as highlighted opposite in red.

Turn the drive over



Place the drive on a flat surface

Push to 2 x tabs inwards as highlighted opposite in red.



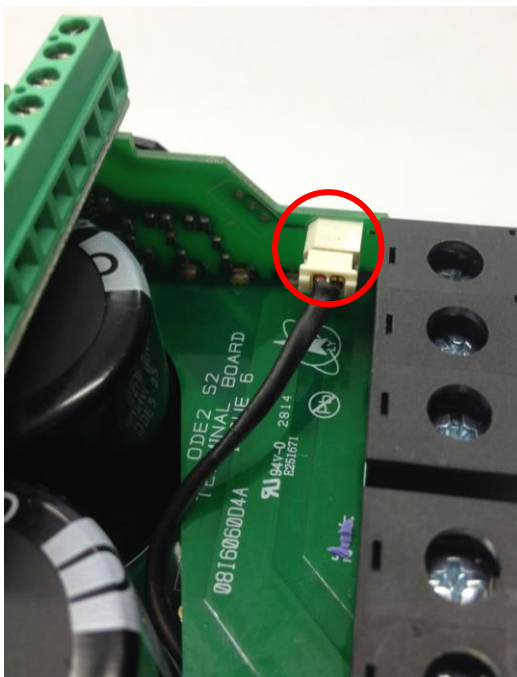
Place the drive on a flat surface

Push to 2 x tabs inwards as highlighted opposite in red.



Pull the gray top cover away from the black base as highlighted in the direction opposite in yellow

Fan disconnection



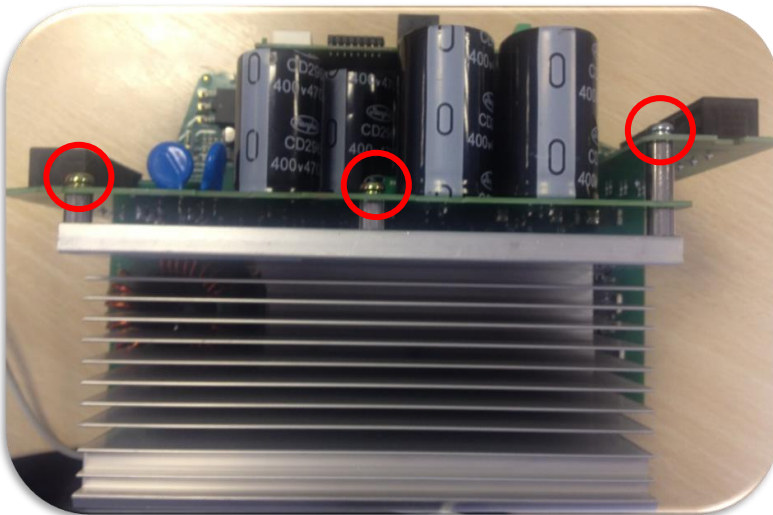
Depending on the HP rating a fan may be fitted to the drive. The fan connection is highlighted opposite.

This can be disconnected using long nose pliers

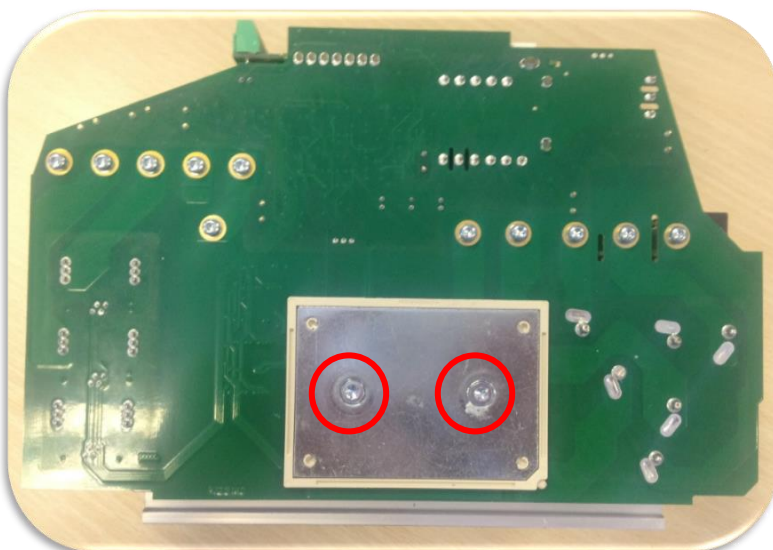


With the plastics removed the drive looks as shown opposite

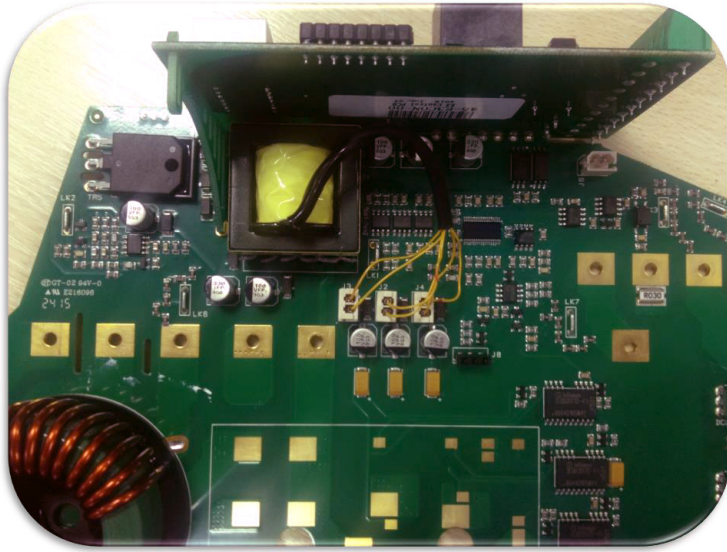
Heatsink removal



Using a torx T20 screwdriver remove the 3 x ground pillar (1.5Nm)



Using a torx T20 screwdriver remove the 2 x screws holding the IGBT module (2Nm) (highlighted in red)



With the heatsink removed,
access can now be made to the
IGBT module

Bardac Drives
40 Log Canoe Circle
Stevensville, MD 21666
(410) 604-3400

bardac.com | driveweb.com | automationthings.com

