



# OPTISTICK User Guide

## OPTISTICK

*For fast and accurate repeat drive programming*

**Compatibility:**

This Option is suitable for use on the following product range:

- ODE-2 Drives
- ODP-2 Drives
- ODV-2 Drives

**Note:**

Parameters can only be copied between drives of the same product range and power rating (size).

Part No. - OPT-2-STICK-IN

82-STICK-IN Iss 2.00



### Drive display message to show the status for certain operation

- PASS-r** : Optistick read / stored the drive parameters successfully.
- DS-Loc** : Optistick is locked; attempting to read parameter from the drive with Optistick lock switch on.
- FA iL-r** : Optistick failed to read parameter from the drive.
- PASS-t** : Optistick transferred parameters to the drive (write parameters to drive) successfully.
- FA iL-P** : The power rating of the parameters saved in the Optistick does not match the power-rating of the drive to be programmed.
- FA iL-t** : Optistick failed to transfer parameter set to drive.
- no-dAt** : No parameter data saved in the Optistick.
- dr-Loc** : Drive parameters have been locked and cannot accept new parameter settings. Unlock drive parameter set.
- dr-rUn** : Drive is running and cannot accept new parameter settings. Stop drive operation before programming.
- tYPE-E** : Parameters for Drive type saved in Optistick do not match the drive type to be programmed (write operation only).
- tYPE-F** : Optistick currently doesn't support the drive type to be programmed.



# OPTISTICK User Guide

## OPTISTICK

*For fast and accurate repeat drive programming*

**Compatibility:**

This Option is suitable for use on the following product range:

- ODE-2 Drives
- ODP-2 Drives
- ODV-2 Drives

**Note:**

Parameters can only be copied between drives of the same product range and rating (size).

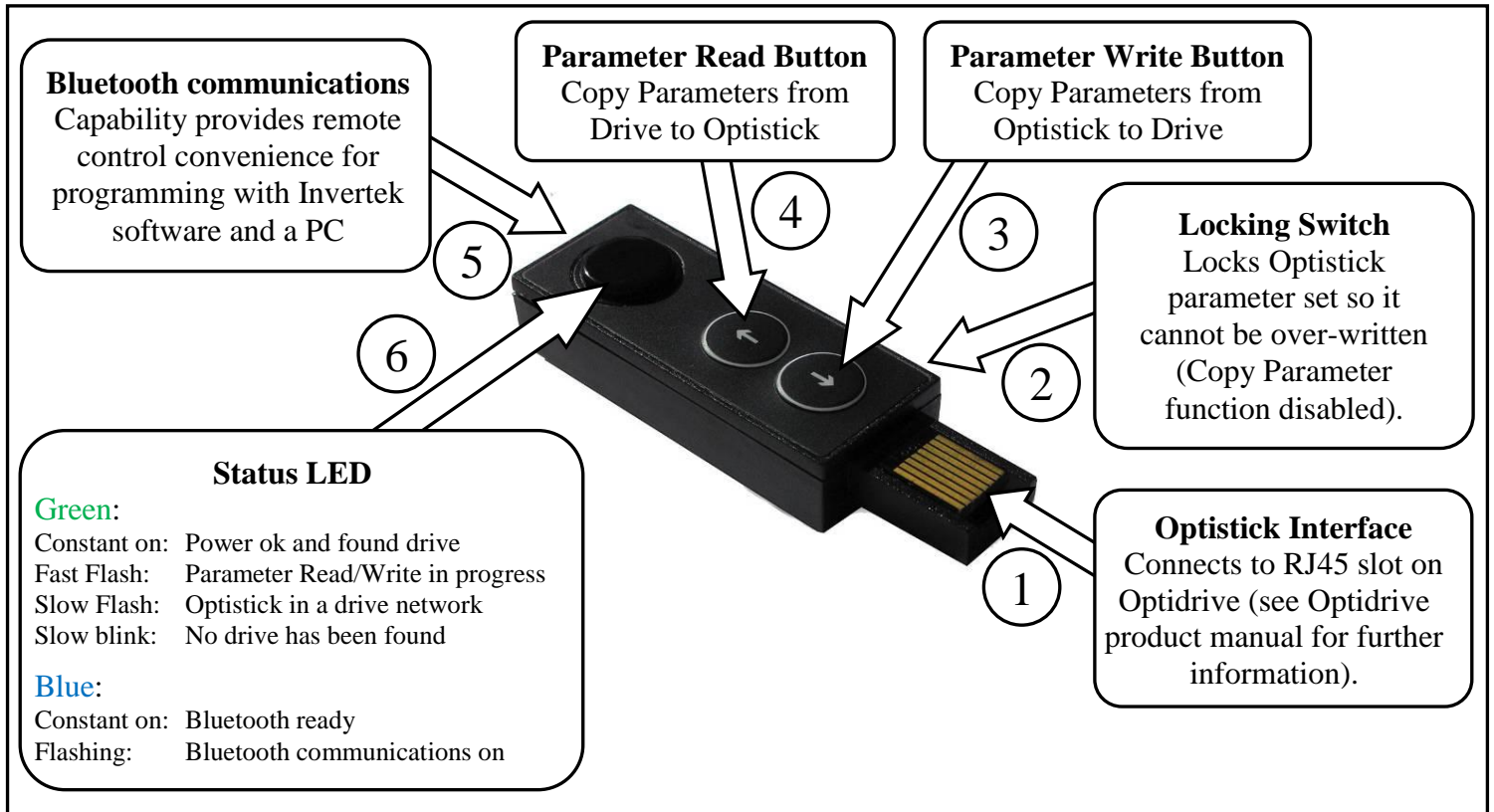
Part No. - OPT-2-STICK-IN

82-STICK-IN Iss 2.00



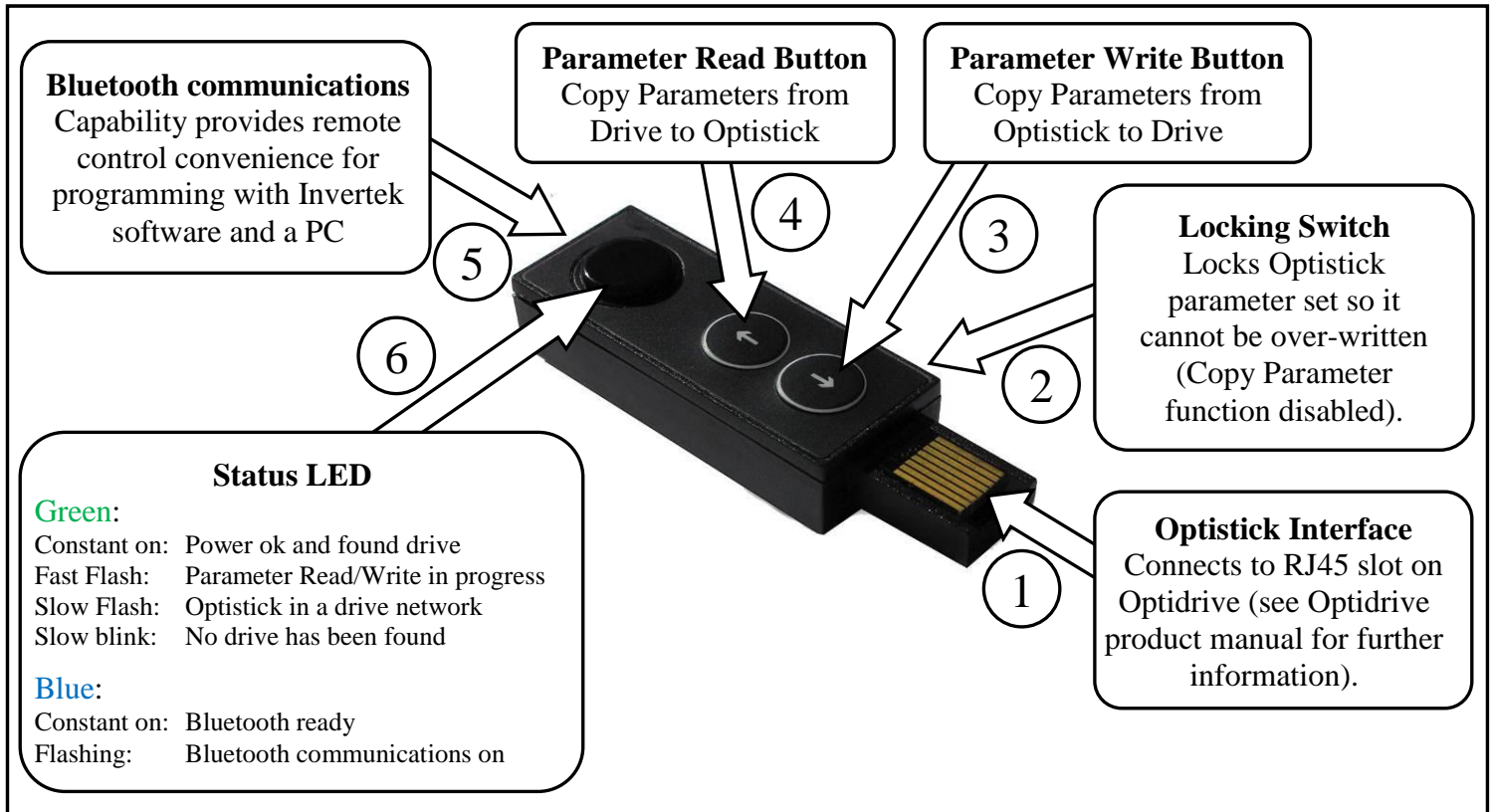
### Drive display message to show the status for certain operation

- PASS-r** : Optistick read / stored the drive parameters successfully.
- DS-Loc** : Optistick is locked; attempting to read parameter from the drive with Optistick lock switch on.
- FA iL-r** : Optistick failed to read parameter from the drive.
- PASS-t** : Optistick transferred parameters to the drive (write parameters to drive) successfully.
- FA iL-P** : The power rating of the parameters saved in the Optistick does not match the power-rating of the drive to be programmed.
- FA iL-t** : Optistick failed to transfer parameter set to drive.
- no-dAt** : No parameter data saved in the Optistick.
- dr-Loc** : Drive parameters have been locked and cannot accept new parameter settings. Unlock drive parameter set.
- dr-rUn** : Drive is running and cannot accept new parameter settings. Stop drive operation before programming.
- tYPE-E** : Parameters for Drive type saved in Optistick do not match the drive type to be programmed (write operation only).
- tYPE-F** : Optistick currently doesn't support the drive type to be programmed.



**Using Invertek Windows PC software:**

- Download the appropriate PC software from the Invertek Website. (PC must have a Bluetooth port in order to use Bluetooth communication)
- Insert the Optistick into the drive.
- Pair the Bluetooth device. Default pairing code is "0000" and default device name is "Optistick".
- Setup an outgoing port on the PC with the Optistick Bluetooth device. This port will be used by PC software.



**Using Invertek Windows PC software:**

- Download the appropriate PC software from the Invertek Website. (PC must have a Bluetooth port in order to use Bluetooth communication)
- Insert the Optistick into the drive.
- Pair the Bluetooth device. Default pairing code is "0000" and default device name is "Optistick".
- Setup an outgoing port on the PC with the Optistick Bluetooth device. This port will be used by PC software.