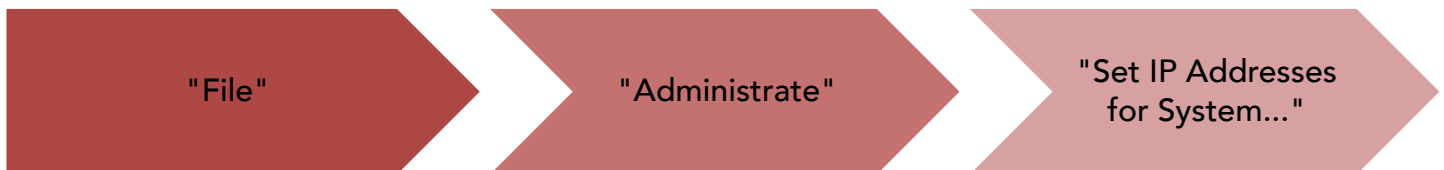


## Discovering *drive.web* Devices in *savvy* with TWO Network Interfaces Enabled

This is an Application Note that describes problems that may occur with discovering devices and setting device IP addresses when the computer is connected to more than one network interface. This is commonly encountered when using WiFi for Internet access and a wired interface to an isolated machine network.

In order for *savvy* to use Set IP Addresses for System and Discover Local Devices Now, the application uses a method called IPv4 link-local multicast.

Set IP Addresses for System:



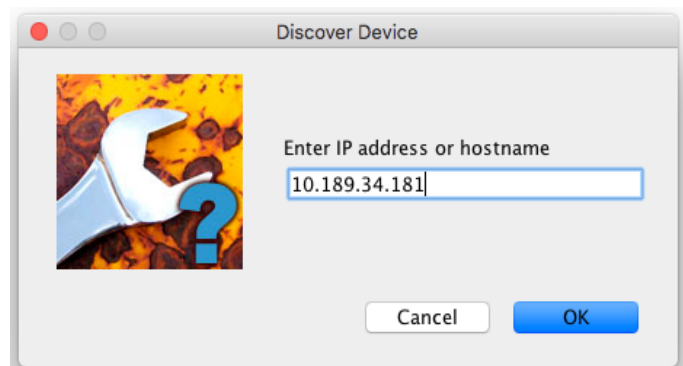
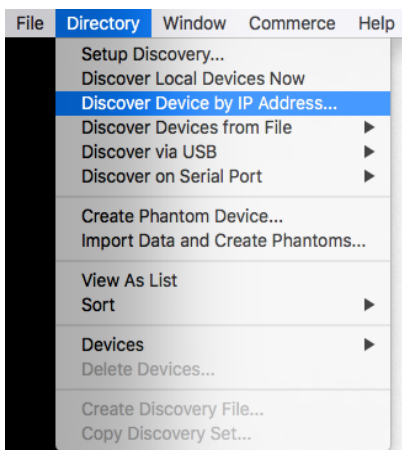
Discover Local Devices Now:



Multicast is a method that will send a single transmission of data to all network ports. Due to the limitations put on by the operating system, multicast is unable to work on a computer using two active network interfaces at the same time (e.g. WiFi and Ethernet).

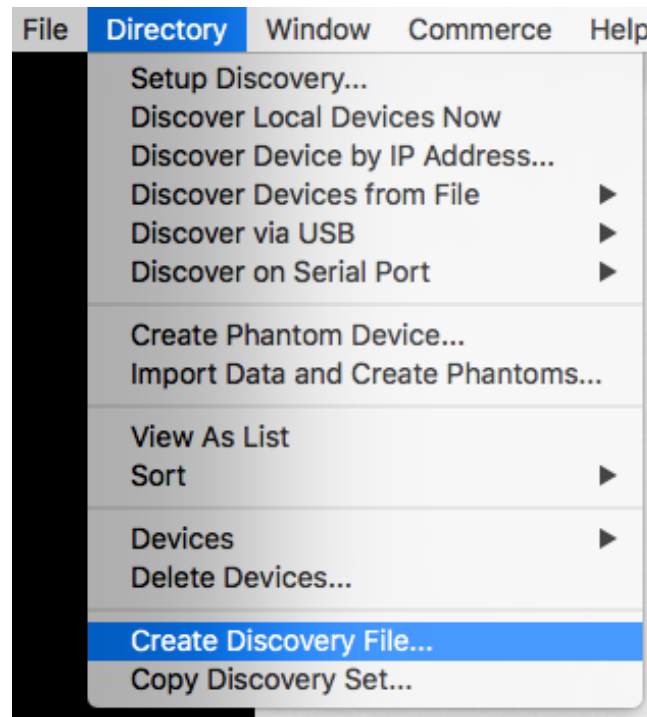
If a *drive.web* device is unable to be discovered via "Discover Local Devices Now", there are ways around the use of multicast. This note is written with the assumption that the computer network is set up with appropriate IP address and subnet mask that would allow communication with *drive.web* devices.

If the IP address of the device *is known*, use Directory → Discover Device by IP Address... This will open a new window. Enter the IP address of the device in the text field and click the OK button. The *drive.web* device should now be visible in the Device Directory.

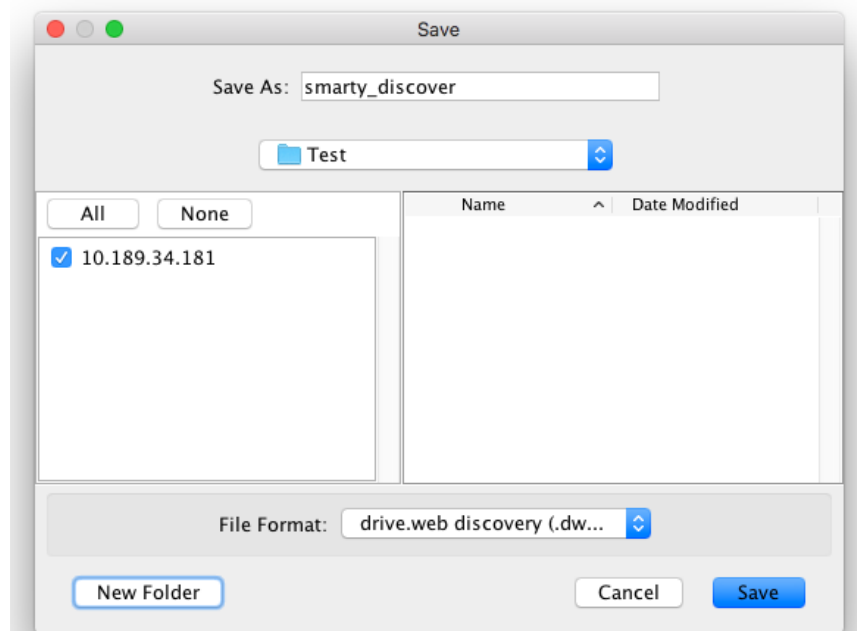


If the IP address of the device *is NOT known*, start by turning off the WiFi on the computer temporarily, and then use Directory → Discover Local Devices Now. Once the *drive.web* device is in the Device Directory, WiFi can be turned on again.

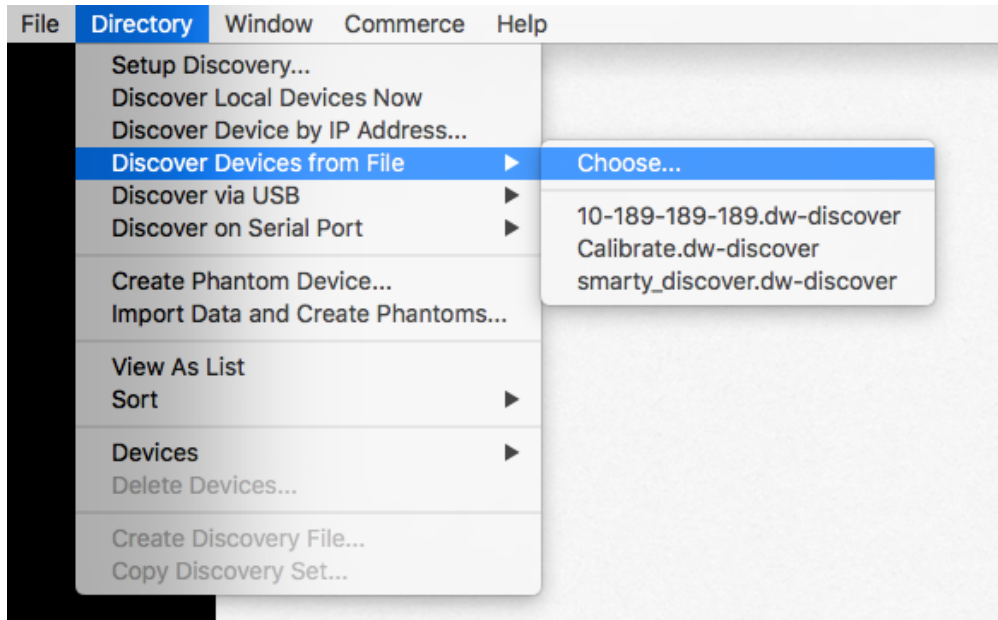
To avoid turning off the WiFi for future use, *savvy* has the option to create a Discovery file. This file allows specified devices to be discovered without the use of multicast and can include as many *drive.web* devices as desired. Open Directory → Create Discovery File...



The window to save a discovery file will open. Ensure any needed devices are checked, enter a file name in the Save As: text box, and save the file locally.



To use the Discovery file:



If the IP address of the **drive.web** device needs to be changed without the use of multicast, do not use File → Administrate → Set IP Addresses for System... It is possible to set the IP address of an individual device; the serial number of the device must be known to use this method. Open File → Administrate → Set Device IP Address and a second window will open. Enter the serial number and the **NEW** IP address to be assigned. The **drive.web** device will restart and return to the Device Directory.

