

How to Update Firmware in dw230



WARNING!

If this operation fails for any reason (e.g. power failure, network failure, etc.), the device will be rendered inoperable and must be returned to the factory for recovery! It is recommended to have a direct connection from the computer to the device in order to minimize the chance of a network failure. You may use Ethernet or USB to directly connect your computer to the device.

This document instructs you on how to update the firmware of dw230 savvyPanel Touch Interface using savvy.

Before You Begin

1. The latest version of Java Runtime Environment must be installed to run savvy. Here is a link to download Java for free if you need it: <http://www.java.com/>
2. Download the current version savvy from <http://driveweb.com/tech/update.php>. Click on **Download the FREE version of drive.web savvy**.
3. You can download the latest firmware at <http://driveweb.com/tech/update.php> as well. At the bottom of the page under ***firmware***, there is a dw230 zip file that contains the latest version of firmware. BE SURE TO UNZIP THIS FILE TO A CONVENIENT LOCATION BEFORE YOU BEGIN.



WARNING!

This software enables the user to have extensive access to potentially dangerous machinery. This software must only be used by qualified personnel who are completely familiar with the machinery and the software. This software can cause the machinery to start and stop unexpectedly or to operate in a dangerous manner that could cause serious injury or death. Extreme caution is essential – the user hereby accepts responsibility for the use of this product.

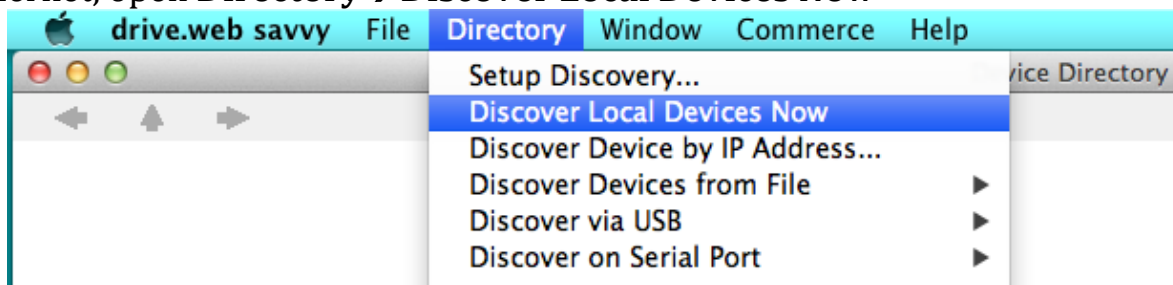


WARNING!

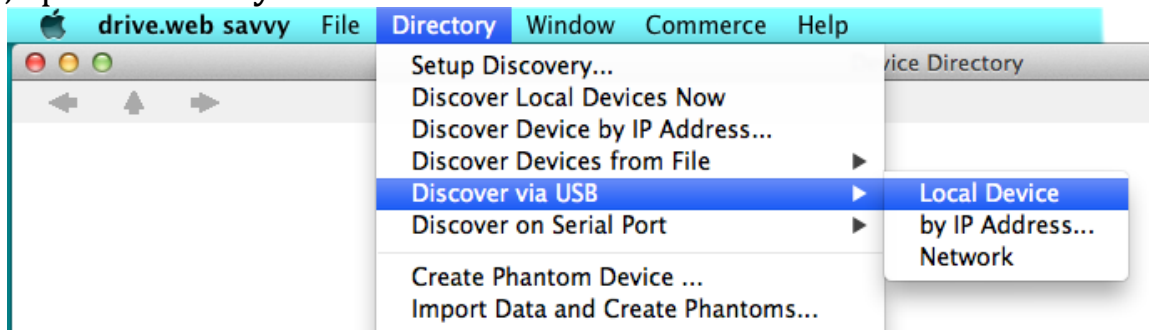
Before you continue, ensure that your system is inhibited to prevent dangerous voltages and rotating machinery. This update will not modify your system, but it is important to prevent any motion that may cause injury or damage to hardware.

4. If the device is on a network with other devices such as a PLC or other drive.web devices, it would be best to remove them from the network or disable all device polling to reduce network traffic during this update.
5. When you are ready to upgrade your device, you will need to discover it. There are a few ways to discover devices depending upon whether you are using Ethernet or USB.

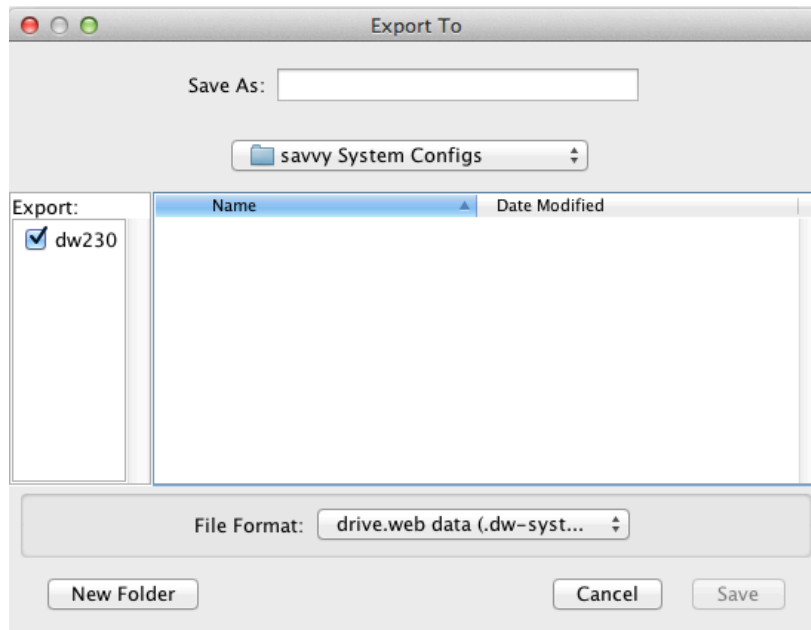
For Ethernet, open **Directory**→**Discover Local Devices Now**



For USB, open **Directory**→**Discover via USB**→**Local Device**



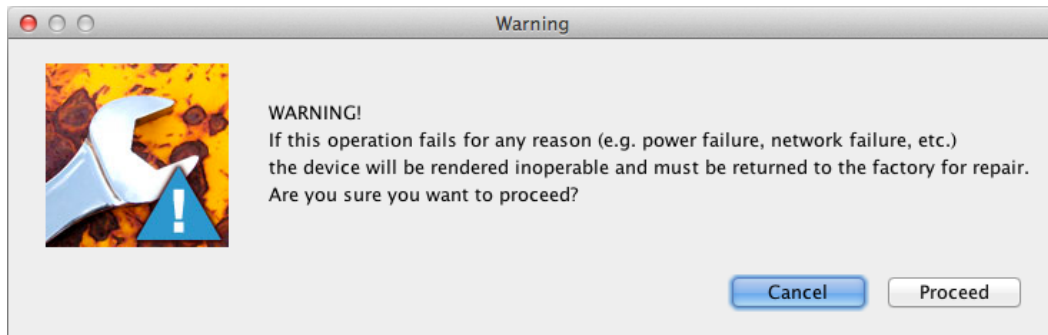
6. This upgrade will not modify the program in the drive, but a backup of the entire system should be made before proceeding. Open **Directory**→**Export Data ...** and select any devices that are part of this system.



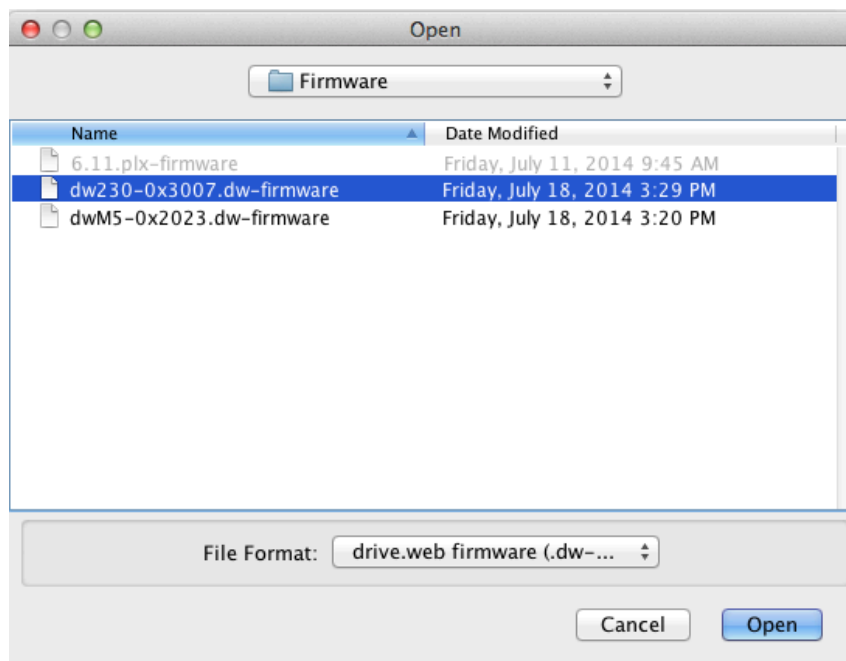
7. Right-click on the device to open the device Contextual Menu. Select **Load Firmware ...**



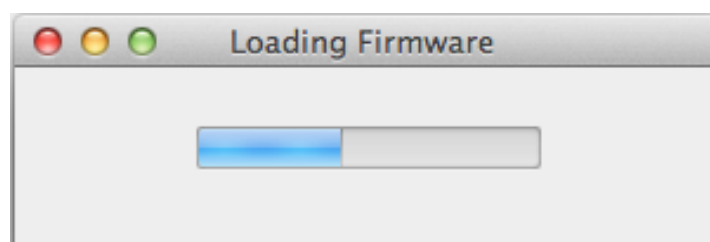
8. Before you can select the firmware file, a warning dialogue will open. PLEASE ENSURE YOU HAVE A ROBUST CONNECTION TO THE DEVICE BEFORE PROCEEDING! Also make sure the power will not be removed from the target device! If you are ready to update the firmware, click Proceed.



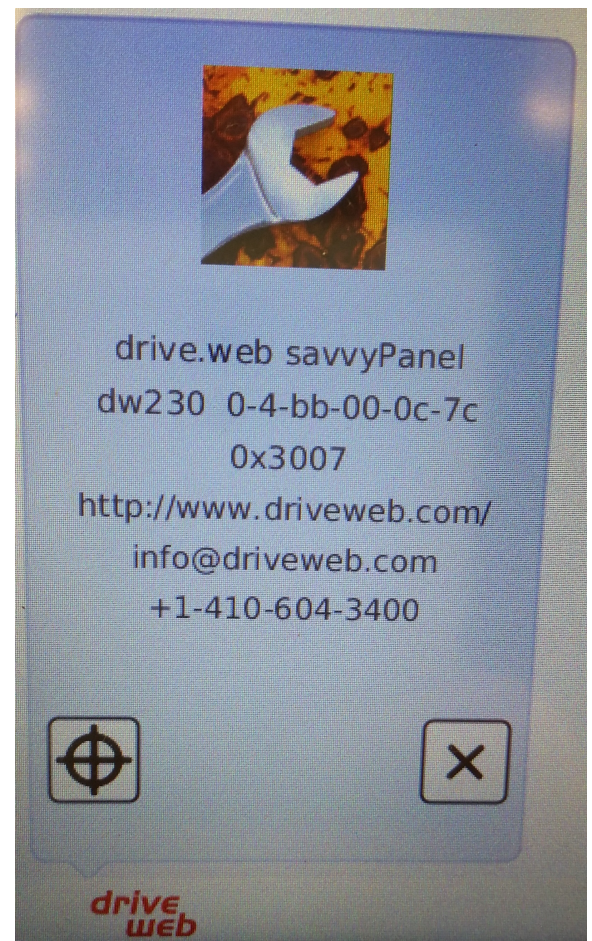
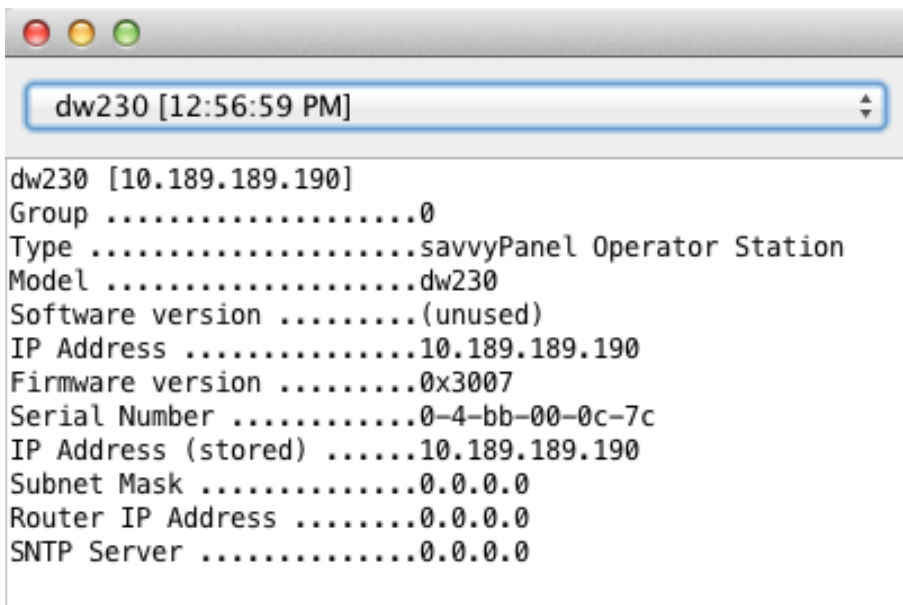
9. Navigate to the directory that contains the file dw230 dw-firmware and select it. **DO NOT INTERRUPT THE PROCESS ONCE FILE HAS BEEN SELECTED!**



10. A progress bar will appear to show the firmware being loaded. The device will restart and will be rediscovered once the update has been completed. If you are using USB discovery, you may need to rediscover the device manually after the Loading Firmware dialogue has closed. This update takes about 10 seconds to complete.



11. To ensure the firmware has been successfully upgraded, open the device Contextual Menu again and select **Get Info**. The Firmware Version should read 0x3007. Confirm the firmware version in the drive.web menu in the bottom left corner of the dw230 display.



drive.web 40 Log Canoe Circle, Stevensville, MD 21666 USA
Ph. 410-603-3400, Fax 410-604-3500, **www.driveweb.com**