

SHARE:

[Join Our Email List](#)



[bardac.com](http://bardac.com) | [driveweb.com](http://driveweb.com) | [automationthings.com](http://automationthings.com)  
(410) 604-3400 | 1 (888) 667-7333

**BARDAC WILL BE CLOSED:  
DECEMBER 25 - January 2, 2022.**

**GIVE THE GIFT OF AUTOMATION THIS SEASON  
ORDER NOW FOR TIMELY DELIVERY!**

**PLEASE CALL (410) 604-3535  
FOR PAID EMERGENCY SERVICE**

**HAPPY HOLIDAYS!**



**Have an astronomically good 2022!**



If you received a calendar last year no need to reorder, you're already on our list; we've checked it twice and you're getting a calendar. If you didn't, please [Click Here!](#)

Did you see our last newsletter?  
If not, [Click Here](#) to learn about the  
*smarty*<sup>6</sup> and everything else you missed!



Need some help? Let us know how, click here.

Catalog items are typically *IN STOCK*  
and ready to ship same day  
(for orders placed before 4pm EST)!

Please call to confirm availability.

AC & DC drives and *drive.web* automation products

#### AC Vector Drives

- P2 Series AC drives ship standard with conformal coating
- Safe Torque Off
- IP20, NEMA 12, and NEMA 4X
- 230, 460, and 575VAC models
- Ratings through 400HP
- Solar version available with MPPT tracking
- *drive.web* peer-to-peer Ethernet connectivity for real time communication between drives
- **IN STOCK!**



### AC Sensorless Vector Drives

- E3 Series drives are available in an outdoor rated NEMA 4X package through 30HP
- IP20, with ratings through 50HP
- Single phase in- and output drives
- 115, 230, and 460VAC models
- Reverse PID for solar applications
- [drive.web](#) peer-to-peer Ethernet connectivity for real time communication between drives
- **IN STOCK!**

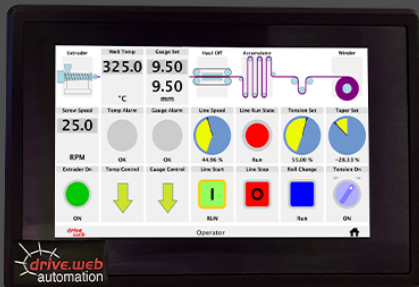
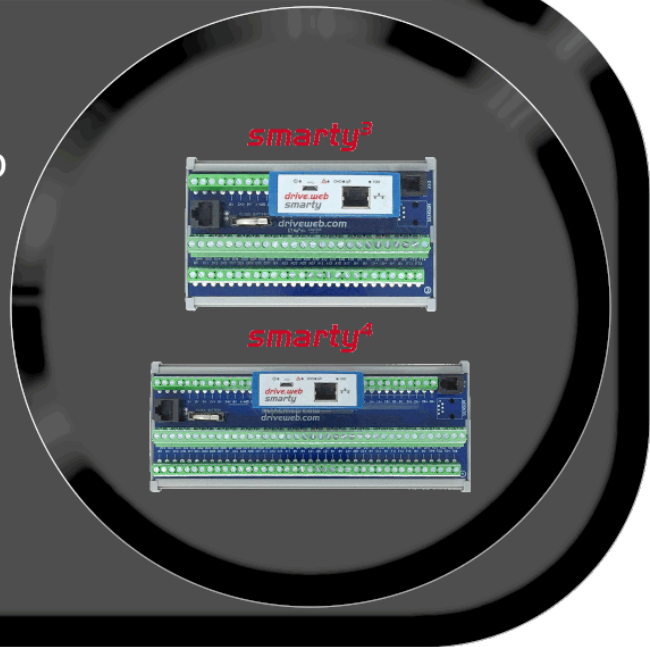


### DC Drives

- Complete range of regenerative and non-regenerative DC drives, single and three phase input, with wide ranging current and voltage ratings.
- Available with fuses and contactors built in
- Up to 2000HP available for same day shipment
- [drive.web](#) peer-to-peer Ethernet connectivity for real time communication between drives
- **IN STOCK!**

### **drive.web Automation Controllers with I/O**

- High resolution analog I/O
- Ample digital I/O
- Frequency inputs (100kHz)
- Encoder inputs (500kHz)
- Pulse outputs (1MHz)
- Multiple motion control functions built into a DIN rail mounted package
- **IN STOCK!**



### **drive.web Touch Screen Operator Stations**

- Plug and play, **drive.web** native
- Nema 4 (IP65) splash-proof front
- IP20 rear
- Easy set up, competitively priced
- Crisp, high visibility graphics
- 1 Ethernet port 10/100baseTX
- Power supply 24VDC
- Working temp: -4 to 158F
- 5, 7, and 9.7" touch screens available
- **IN STOCK!**



Share This Email



Share This Email



Share This Email



Share This Email