



# *drive.web*

*Experience the raw power of  
the new smarty<sup>7</sup>!*



- PLC replacement
- Designed and assembled in the USA
- Smart distributed control
- Peer-to-peer connections over Ethernet

- unlimited i/o expansion
- Internet accessible
- 100% compatibility with all other drive.web devices
- savvy design, monitoring, and diagnostic tools
- DIN rail or screw-panel mounting options
- 60 plug-in terminals
- Dimensions: 0.7"x3.5"x4.7" [17.2mmx90mmx119mm] (WxHxD)
- Core Part# dw250-DM-S7

**In Stock!**

## **Applications Solved!**

- Complex Logic Control
- Winders: slip core, open loop, closed loop with either dancer or loadcell feedback
- Digitally lock motors; two motor locking or multi-motor locking over Ethernet
- Position Control
- Advanced Motion Control
- Pump Control: single pump or multiple pumps
- Sun tracking for solar array control
- Multi-package, multi-trajectory conveyor tracking
- and much more!

## **Features:**

- 8 Analog inputs (16 bit) or digital inputs 5 to 24VDC
- 8 Analog outputs,  $\pm 10$ VDC 10mA
- 8 24VDC Digital inputs (50VDC Max)
- 8 24VDC Digital outputs
- 6 Combined frequency, timing, event inputs 100kHz. Stepper, frequency, digital outputs, 30V 500kHz max.
- 1 Timing output, stepper, frequency, digital, 30V, 100kHz.
- 2x Encoder inputs: Quadrature, 2x AB or 1x ABZ (marker) 1MHz

- 5V supply output, 250mA max
- Registration control
- Motion Control Function Block
- State Machine Function Block
- Floating-point numbers and math
- ModbusRTU client (server optional)
- Modbus TCP/IP Client & Server
- EIP/PCCC Server
- savvyPanel touch screen controller
- Dedicated CANopen device options available
- Connect directly to Bardac P2 & E3 AC drives
- 100baseTX Ethernet
- USB C interface
- Plug-in terminals

## Your Bardac and *drive.web* favorites, now online:

### AC Vector Drives

- P2 Series AC drives ship standard with conformal coating
- Safe Torque Off
- IP20, NEMA 12, and NEMA 4X
- 230, 460, and 575VAC models
- Ratings through 400HP
- Solar version available with MPPT tracking
- Bright TFT display
- *drive.web* peer-to-peer Ethernet connectivity for real time communication between drives
- Please consult Bardac for availability



### AC Sensorless Vector Drives

- E3 Series drives are available in an outdoor rated NEMA 4X package through 30HP
- IP20 ratings through 50HP
- Single Phase in and Single Phase out
- 115, 230, and 460VAC models
- Reverse PID for solar applications
- [drive.web](#) peer-to-peer Ethernet connectivity for real time communication between drives
- Please consult Bardac for availability



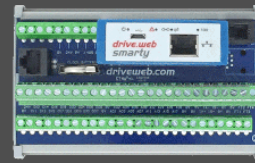
### DC Drives

- Complete range of regenerative and non-regenerative DC drives, single and three phase input, with wide ranging current and voltage ratings.
- Available with fuses and contactors built in
- Up to 2000HP available for same day shipment
- [drive.web](#) peer-to-peer Ethernet connectivity for real time communication between drives
- IN STOCK!

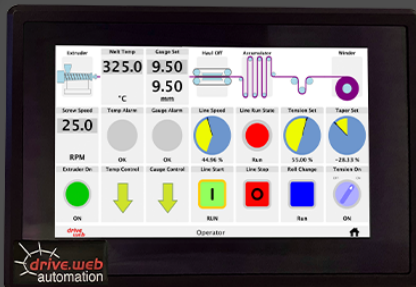
### **drive.web** Automation Controllers with I/O

- High resolution analog I/O
- Ample digital I/O
- Frequency inputs (100kHz)
- Encoder inputs (500kHz)
- Pulse outputs (1MHz)
- Multiple motion control functions built into a DIN rail mounted package
- **IN STOCK!**

**smarty<sup>3</sup>**



**smarty<sup>4</sup>**



### **drive.web** Touch Screen Operator Stations

- Plug and play, drive.web native
- NEMA 4 (IP65) splash-proof front
- IP20 rear
- Easy set up, competitively priced
- Crisp, high visibility graphics
- 1 Ethernet port 10/100baseTX
- Power supply 24VDC
- Working temp: -4 to 158F
- 5, 7, and 9.7" touch screens available
- **IN STOCK!**

**and so much more!**

**Catalog items are typically *IN STOCK*  
and ready to ship same day  
(for orders placed before 4pm EST)!**

Please call to confirm availability.



Please click the icon above to download **savvy** for desktop.  
Please Alternatively click below to download  
**savvyPanel** on the iOS or Android appstores (respectively)

[iOS](#)

[Android](#)

Need help with a project, click here!

**bardac.com | driveweb.com**  
**AutomationThings.com**  
**(410) 604-3400 | 1 (888) 667-7333**

