

Bardac Drives Catalog 2024

Issue 1



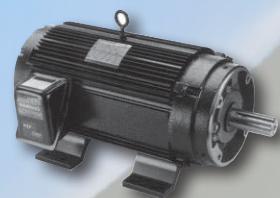
drive.web AUTOMATION



AC DRIVES



DC DRIVES



MOTORS

AutomationThings

Everything is...

... Internet accessible

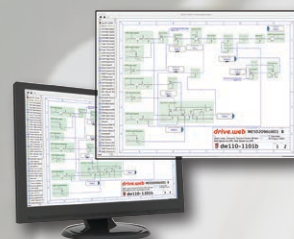
... Ethernet workable, peer-to-peer

... Configurable from anywhere

... IIoT ready

AutomationThings.com

Everything normally in stock!



SERVICE

Since our founding in 1992 we have worked hard to build our reputation around key goals:

- Innovative technologies.
- Reliable products.
- Unrelenting customer support.
- All catalog items normally in stock.
- Competitive pricing.



Our Company President: Paul Crowhurst

Bardac ...the safe bet!

Seamlessly Integrated Automation



AC DRIVES

Vector Systems
To 400 HP - pages 36 - 38

ECO fan & pump
To 400 HP - pages 39 - 41

General Purpose
To 50 HP - pages 42 - 43

NEMA 4X (IP66)
To 30 HP - page 44

Single Phase
To 1.5 HP - page 46 - 47

CONTROLLERS

drive.web
Ethernet Distributed Control
pages 3 - 33

smarty
Universal Automation Controllers
with I/O - pages 14 - 19

speedy
Embedded & onboard Controllers
pages 20 - 22

Motion
smart motion controllers
pages 30 - 31

TOOLS

savvy
Drive & controller configuration
pages 8 - 9

savvy-SFD
Signal Flow Diagram tools for
system design
pages 10 - 11

drive.web Apps
Pre-Engineered Apps
pages 26 - 33

device Apps
Pre-Engineered interfaces for
third party drives - pages 26 - 33

HMI

savvyPanel
For industrial PC touch screens
pages 12 - 13

savvyPanel touch
Hi Res industrial touch screens
pages 12-13

savvyPanel mobile
HMI app for iPhone, & iPad
pages 12 - 13

DC DRIVES

Single Phase
To 10 HP - pages 48 - 50

DC Servo
Up to 12 A, 48VDC - page 51

3-Phase Digital
To 2000+ HP - pages 52 - 57

Stack Controller
6 & 12 pulse - page 56

Packaged Drives
Modulus pre-engineered
page 58

POWER QUALITY ~ MOTORS ~ ENGINEERING ~ SERVICE ~ SUPPORT ~ TRAINING

pages 58 - 59

Specifications ... At the time of going to press we believe the information in this catalog to be accurate. However, the specifications of products may be amended at any time, so please check with us when ordering to ensure that such changes will not affect your requirements.

PL Series ...digital dc drives



up to
2000+HP

LA503846

dw Ethernet
Through-Panel
Port for closed
door system
access



Standard Features

- Total digital control
- Basic peer-to-peer link
- 40 character backlit display
- Friendly, easy menu structure
- Modern, compact packaging
- Extensive, flexible, plug-in I/O
- RS232 serial port
- Easy configuration saving & cloning
- Built-in automatic field controller
- Built in programmable control functions for PID, winders, orientation, etc.
- Tach, encoder & arm volts feedback
- Easy reliable autotune

All suffix d PL/X drives include an embedded **speedy** Automation Controller (dw221) for safe, doors closed, start up & operation with:

- Easy USB port interface
 - Peer-to-peer Ethernet communications
 - **drive.web** programmable control
 - ModbusTCP over Ethernet
 - Easy, safe, **savvyPanel** "Quick Start"
- see pages 20 & 21 for dw221 details -

Optional:

- ModbusRTU RS485 serial port
- Devicenet, Profibus DP, fieldbus



powerDRIVE Packages

PL/X DC drives up to 1200 horsepower are available in compact **powerDRIVE** packages complete with:

- Main contactor
- High speed 3-phase line fuses
- High speed armature fuse
- High speed control/field fuses
- Line filter (100HP & up)
- USB & Ethernet interface with **speedy dw221**
- Optional motor blower starter (100HP & up)



Key Features

Analog Inputs & Outputs

8 analog inputs & 4 analog outputs (12 bits)
All outputs short circuit protected
All inputs over voltage protected up to +50v
Inputs configurable 5 to 30v
Input volts programmable up to +/-30v

Digital Inputs & Outputs

17 digital inputs & 7 digital outputs
Digital I/O short circuit protected
Digital inputs over volts protected to +50v
(with settable switching levels)
Digital outputs over volts protected to +50v

Speed Feedback - Standard

Analog tach
Encoder
Armature voltage
Encoder + armature volts
Encoder + analog tach

Field Configurations

Fixed Current
Fixed voltage
Automatic field weakening
Delayed field quench
Standby field setting
Field economy

Diagnostic Monitoring

Scope terminal monitors selectable values
All analog input voltages
All digital input states
All analog output voltages
All digital output states
Tach volts
Motor arm volts & amps
Field current
Output power Kw
AC supply volts

User Configurable Software Functions

PID blocks, Parameter profiler, Winder reel diameter calculator, Winder taper tension calculator, Winder torque/inertia/friction compensator, Preset speed function, Two summers, Software "motorized pot", Interval timer, Current profiling, Zero speed with shaft position lock, Jog / crawl functions, Two filters, Dual motor swap, Latch, Sample & hold function, Auto self-tune current loop, Linear and S-ramps, Slack take-up, Batch Counter, Draw control.

Engineered Configuration Packages

Pre-configured generic apps are available for Open & Closed Loop Winders, Position Controls, Coordinated Line Drives, Indexing, registration and others.

Safe, "Doors Closed" Start Up & Operation

The optional dw221 Automation Controller is embedded as standard in size 4 & 5 for easy system wide access to configure, connect & control.

Protection

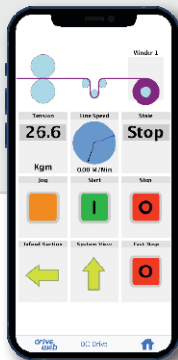
Interline device networks
High energy MOV's
Instantaneous overcurrent
Overcurrent (inverse time)
Field fail and overcurrent
Motor over temperature
SCR (thyristor) over temp
Main power phase loss
Armature over volts
Over speed protection
Speed feedback mismatch
Stall protection
Standstill logic
SCR (Thyristor) trigger failure
Digital output short circuit

Communications Ports*

drive.web peer-to-peer Ethernet
ModbusTCP/IP Ethernet
USB port for easy network wide set up
Serial port (RS232)

Optional Communications

Ethernet: EIP (PCCC)
ModbusRTU
Profibus DP



Easily add a **savvyPanel** touch screen HMI with secure WiFi interface

- Simple, intuitive configuration techniques with clear display of information
- No pots or switches to set
- Accurate display of voltages and currents
- Positive displacement pushbuttons for tactile feel
- High power processor and large memory will ensure ease of product enhancement in the future
- 2-button reset gets users back to OEM set up
- Powerful **savvy** graphical configuration, diagnostics & system design tools



The powerful **savvy** configuration tools are used for the PL Series DC drives, AC drives, **drive.web** programmable controllers, **savvyPanel** operator stations & complete systems.



↑ 75 HP, PLX50/123

powerPLX50/123 →
With fuses, contactor
& power components
(shown hinged open
for easy access)



↑ 400 HP, PL265/630

powerPL265/630 →
With fuses, contactor
& power components
(shown with optional
motor blower starter)



Models & Ratings

4-Quadrant, Regenerative Drives

| HP @ 500V arm 460VAC | HP @ 240V arm 230VAC | Armature Amps DC @ 40°C power(basic) | Field Amps DC | powerDRIVE Model | Dimensions W x H x D (weight) inches (LBS) | basicDRIVE Model | Dimensions W x H x D (weight) inches (LBS) | Line Reactor Model |
|----------------------------|----------------------------|--|------------------|---------------------|--|---------------------|--|--------------------------|
| 20 | 10 | 36 | 5(8) | powerPLX15/36d | 8.5 x 11.4 x 11.7 (26) | PLX15/36d | 8.5 x 11.4 x 6.9 (16) | LM37 |
| 30 | 10 | 51 | 5(8) | powerPLX20/51d | 8.5 x 11.4 x 11.7 (26) | PLX20/51d | 8.5 x 11.4 x 6.9 (16) | LM52 |
| 60 | 25 | 99 | 5(8) | powerPLX40/99d | 8.5 x 11.4 x 11.7 (30) | PLX40/99d | 8.5 x 11.4 x 6.9 (17) | LM120 |
| 75 | 35 | 123 | 5(8) | powerPLX50/123d | 8.5 x 11.4 x 11.7 (30) | PLX50/123d | 8.5 x 11.4 x 6.9 (17) | LM120 |
| 100 | 50 | 164 | 10(16) | powerPLX65/164d | 16 x 33 x 9.7 (80) | PLX65/164d | 8.5 x 16.2 x 8.6 (27) | LM150 |
| 125 | 60 | 205 | 10(16) | powerPLX85/205d | 16 x 33 x 9.7 (80) | PLX85/205d | 8.5 x 16.2 x 8.6 (27) | LM195 |
| 150 | 75 | 270 | 10(16) | powerPLX115/270d | 16 x 33 x 9.7 (82) | PLX115/270d | 8.5 x 16.2 x 8.6 (28) | LM240 |
| 200 | 100 | 330 | 10(16) | powerPLX145/330d | 16 x 33 x 9.7 (89) | PLX145/330d | 8.5 x 16.2 x 8.6 (28) | LM300 |
| 250 | 125 | 405 | 20(32) | powerPLX185/405d | 16 x 43.5 x 14.4 (143) | PLX185/430d | 8.5 x 19.9 x 14.4 (43) | LM375 |
| 300 | 150 | 480 | 20(32) | powerPLX225/480d | 16 x 43.5 x 14.4 (145) | PLX225/530d | 8.5 x 19.9 x 14.4 (45) | LM480 |

2-Quadrant, Non-Reversing Drives

| HP @ 500V arm 460VAC | HP @ 240V arm 230VAC | Armature Amps DC @ 40°C power(basic) | Field Amps DC | powerDRIVE Model | Dimensions W x H x D (weight) inches (LBS) | basicDRIVE Model | Dimensions W x H x D (weight) inches (LBS) | Line Reactor Model |
|----------------------------|----------------------------|--|------------------|---------------------|--|---------------------|--|--------------------------|
| 20 | 10 | 36 | 5(8) | powerPL15/36d | 8.5 x 11.4 x 11.7 (26) | PL15/36d | 8.5 x 11.4 x 6.9 (16) | LM37 |
| 30 | 10 | 51 | 5(8) | powerPL20/51d | 8.5 x 11.4 x 11.7 (26) | PL20/51d | 8.5 x 11.4 x 6.9 (16) | LM52 |
| 60 | 25 | 99 | 5(8) | powerPL40/99d | 8.5 x 11.4 x 11.7 (30) | PL40/99d | 8.5 x 11.4 x 6.9 (17) | LM120 |
| 75 | 35 | 123 | 5(8) | powerPL50/123d | 8.5 x 11.4 x 11.7 (30) | PL50/123d | 8.5 x 11.4 x 6.9 (17) | LM120 |
| 100 | 50 | 164 | 10(16) | powerPL65/164d | 16 x 33 x 9.7 (80) | PL65/164d | 8.5 x 16.2 x 8.6 (27) | LM150 |
| 125 | 60 | 205 | 10(16) | powerPL85/205d | 16 x 33 x 9.7 (80) | PL85/205d | 8.5 x 16.2 x 8.6 (27) | LM195 |
| 150 | 75 | 270 | 10(16) | powerPL115/270d | 16 x 33 x 9.7 (82) | PL115/270d | 8.5 x 16.2 x 8.6 (28) | LM240 |
| 200 | 100 | 330 | 10(16) | powerPL145/330d | 16 x 33 x 9.7 (89) | PL145/330d | 8.5 x 16.2 x 8.6 (28) | LM300 |
| 250 | 125 | 405 | 20(32) | powerPL185/405d | 16 x 43.5 x 14.4 (143) | PL185/430d | 8.5 x 19.9 x 14.4 (43) | LM375 |
| 300 | 150 | 480 | 20(32) | powerPL225/480d | 16 x 43.5 x 14.4 (143) | PL225/530d | 8.5 x 19.9 x 14.4 (45) | LM480 |
| 400 | 200 | 630 | 20(32) | powerPL265/630d | 16 x 43.5 x 14.4 (154) | PL265/630d | 8.5 x 19.9 x 14.4 (45) | LM600 |

basicDRIVES must be installed with new contactor and the correct high speed SCR fuses to maintain the warranty
drive.web options see pages 24 - 25

USB cable for programming (USB A to USB-C), 2M long - part number LA504302, please call +410-604-3400
Computer RS232 Communications Cable - Drive to DB9 - part number LA102595, included with every drive
For details of Drive Isolation Transformers, Line Reactors and Line Filters, please call +410-604-3400

PL-Series Drives to 2000HP

Models & Ratings

DC drives 400 HP to 2000 HP are normally available as **basicDRIVES** but can be supplied with **powerKITS** including:

- High speed fuses for line, armature & field
- Main DC contactor
- Line filter
- Flexible bus bar kits

(**basicDRIVES** must be installed with new power components to maintain the warranty)

Drives are available for either 6-pulse or 12-pulse, 460, 600 or 690 VAC configurations - please call for further information.

SAFE, "DOORS CLOSED" START UP AND OPERATION

Drive models with suffix "d" include a speedy dw221 onboard controller with drive.web



savvyPanel touch
Easy HMI option

DC Drives - 500 VDC Armature, 480VAC Supply

| HP @ | ARMATURE AMPS DC @ 40°C | FIELD AMPS DC Basic(Optional) | basicDRIVE 4-QUAD REGEN REVERSING | basicDRIVE NON-REVERSING | DIMENSIONS W x H x D (weight) INCHES (LBS) TOP CABLE ENTRY | OVERLOAD RATING |
|------|-------------------------------|-------------------------------------|--|------------------------------------|---|--------------------|
| 400 | 650 | 32 (50) | PLX275/650d | PL275/650d | 10 x 30 x 13.8 (120) | 150%, 25 SECS |
| 450 | 750 | 32 (50) | PLX315/750d | PL315/750d | 10 x 30 x 13.8 (120) | 150%, 25 SECS |
| 500 | 850 | 32 (50) | PLX360/850d | PL360/850d | 10 x 30 x 13.8 (120) | 150%, 25 SECS |
| 575 | 950 | 32 (50) | PLX400/950d | PL400/950d | 10 x 30 x 13.8 (120) | 150%, 25 SECS |
| 650 | 1050 | 32 (50) | PLX440/1050d | PL440/1050d | 10 x 30 x 13.8 (120) | 100%, CONT |
| 750 | 1250 | 64 | PLX520/1250d | PL520/1250d | 20 x 30 x 13.8 (285) | 150%, 25 SECS |
| 895 | 1450 | 64 | PLX600/1450d | PL600/1450d | 20 x 30 x 13.8 (285) | 150%, 25 SECS |
| 1000 | 1650 | 64 | PLX700/1650d | PL700/1650d | 20 x 30 x 13.8 (285) | 150%, 25 SECS |
| 1140 | 1850 | 64 | PLX800/1850d | PL800/1850d | 20 x 30 x 13.8 (285) | 150%, 25 SECS |
| 1260 | 2050 @35°C | 64 | PLX900/2050d | PL900/2050d | 20 x 30 x 13.8 (285) | 150%, 25 SECS |
| 1380 | 2250 @35°C | 64 | PLX980/2250d | PL980/2250d | 20 x 30 x 13.8 (285) | 100%, CONT |

DC Drives - 600 VDC Armature, 600VAC Supply

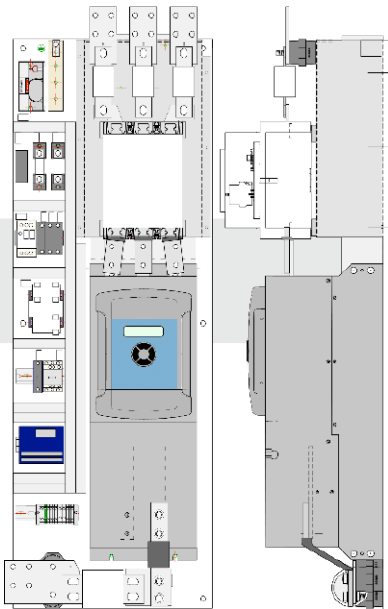
| | | | | | | |
|------|------------|---------|----------------|---------------|----------------------|---------------|
| 480 | 650 | 32 (50) | PLX275MV/650d | PL275MV/650d | 10 x 30 x 13.8 (120) | 150%, 25 SECS |
| 550 | 750 | 32 (50) | PLX315MV/750d | PL315MV/750d | 10 x 30 x 13.8 (120) | 150%, 25 SECS |
| 630 | 850 | 32 (50) | PLX360MV/850d | PL360MV/850d | 10 x 30 x 13.8 (120) | 150%, 25 SECS |
| 700 | 950 | 32 (50) | PLX400MV/950d | PL400MV/950d | 10 x 30 x 13.8 (120) | 150%, 25 SECS |
| 775 | 1050 | 32 (50) | PLX440MV/1050d | PL440MV/1050d | 10 x 30 x 13.8 (120) | 100%, CONT |
| 925 | 1250 | 64 | PLX520MV/1250d | PL520MV/1250d | 20 x 30 x 13.8 (285) | 150%, 25 SECS |
| 1075 | 1450 | 64 | PLX600MV/1450d | PL600MV/1450d | 20 x 30 x 13.8 (285) | 150%, 25 SECS |
| 1220 | 1650 | 64 | PLX700MV/1650d | PL700MV/1650d | 20 x 30 x 13.8 (285) | 150%, 25 SECS |
| 1370 | 1850 | 64 | PLX800MV/1850d | PL800MV/1850d | 20 x 30 x 13.8 (285) | 150%, 25 SECS |
| 1510 | 2050 @35°C | 64 | PLX900MV/2050d | PL900MV/2050d | 20 x 30 x 13.8 (285) | 150%, 25 SECS |
| 1660 | 2250 @35°C | 64 | PLX980MV/2250d | PL980MV/2250d | 20 x 30 x 13.8 (285) | 100%, CONT |

DC Drives - 700 VDC Armature, 690VAC Supply

| | | | | | | |
|------|------------|---------|----------------|---------------|----------------------|---------------|
| 550 | 650 | 32 (50) | PLX275HV/650d | PL275HV/650d | 10 x 30 x 13.8 (120) | 150%, 25 SECS |
| 650 | 750 | 32 (50) | PLX315HV/750d | PL315HV/750d | 10 x 30 x 13.8 (120) | 150%, 25 SECS |
| 735 | 850 | 32 (50) | PLX360HV/850d | PL360HV/850d | 10 x 30 x 13.8 (120) | 150%, 25 SECS |
| 820 | 950 | 32 (50) | PLX400HV/950d | PL400HV/950d | 10 x 30 x 13.8 (120) | 150%, 25 SECS |
| 900 | 1050 | 32 (50) | PLX440HV/1050d | PL440HV/1050d | 10 x 30 x 13.8 (120) | 100%, CONT |
| 1080 | 1250 | 64 | PLX520HV/1250d | PL520HV/1250d | 20 x 30 x 13.8 (285) | 150%, 25 SECS |
| 1250 | 1450 | 64 | PLX600HV/1450d | PL600HV/1450d | 20 x 30 x 13.8 (285) | 150%, 25 SECS |
| 1420 | 1650 | 64 | PLX700HV/1650d | PL700HV/1650d | 20 x 30 x 13.8 (285) | 150%, 25 SECS |
| 1600 | 1850 | 64 | PLX800HV/1850d | PL800HV/1850d | 20 x 30 x 13.8 (285) | 150%, 25 SECS |
| 1770 | 2050 @35°C | 64 | PLX900HV/2050d | PL900HV/2050d | 20 x 30 x 13.8 (285) | 150%, 25 SECS |
| 1940 | 2250 @35°C | 64 | PLX980HV/2250d | PL980HV/2250d | 20 x 30 x 13.8 (285) | 100%, CONT |

DC powerDRIVES - 500 VDC Armature, 480 VAC Supply & powerKITS

| HP @ 500 VDC 460 VAC | ARMATURE AMPS DC @40°C | FIELD AMPS DC | FRAME SIZE | powerDRIVE w/contactor & fuses & <i>dw221 speedy</i> | Contactor Kit Contactor + mount bus bars & h/w | Fuse Kit Line, Regen Arm & Aux Fuses + mountings + h/w | Fan Supply Kit 460/230V Transfmr Fuses + h/w |
|---|------------------------------|------------------|---------------|--|--|--|--|
| REGENERATIVE, REVERSING, 4-QUADRANT DRIVES | | | | | | | |
| 400 | 650 | 32 (50) | 4 | powerPLX275/650v2d | CON-800V700A | FPX650 | FANSUPPLY4 |
| 450 | 750 | 32 (50) | 4 | powerPLX315/750v2d | CON-800V850A | FPX750 | FANSUPPLY4 |
| 500 | 850 | 32 (50) | 4 | powerPLX360/850v2d | CON-800V850A | FPX850 | FANSUPPLY4 |
| 575 | 950 | 32 (50) | 4 | powerPLX400/950v2d | CON-800V1000A | FPX950 | FANSUPPLY4 |
| 600 | 1000 | 64 | 5 | powerPLX520/1000d | CON-800V1200A | FPX1000 | FANSUPPLY5 |
| 700 | 1150 | 64 | 5 | powerPLX520/1150d | CON-800V1200A | FPX1150 | FANSUPPLY5 |
| 800 | 1350 | 64 | 5 | powerPLX600/1350d | CON-800V1750A | FPX1350 | FANSUPPLY5 |
| 1000 | 1650 | 64 | 5 | powerPLX700/1650d | CON-800V1750A | FPX1650 | FANSUPPLY5 |
| 1100 | 1750 | 64 | 5 | powerPLX800/1750d | CON-800V2000A | FPX1750 | FANSUPPLY5 |
| 1200 | 1950 | 64 | 5 | powerPLX900/1950d | CON-800V2000A | FPX1950 | FANSUPPLY5 |
| NON-REGENERATIVE, 2-QUADRANT DRIVES | | | | | | | |
| 400 | 650 | 32 (50) | 4 | powerPL275/650v2d | CON-800V700A | FP650 | FANSUPPLY4 |
| 450 | 750 | 32 (50) | 4 | powerPL315/750v2d | CON-800V850A | FP750 | FANSUPPLY4 |
| 500 | 850 | 32 (50) | 4 | powerPL360/850v2d | CON-800V850A | FP850 | FANSUPPLY4 |
| 575 | 950 | 32 (50) | 4 | powerPL400/950v2d | CON-800V1000A | FP950 | FANSUPPLY4 |
| 700 | 1150 | 64 | 5 | powerPL520/1150d | CON-800V1200A | FP1150 | FANSUPPLY5 |
| 800 | 1350 | 64 | 5 | powerPL600/1350d | CON-800V1750A | FP1350 | FANSUPPLY5 |
| 1000 | 1650 | 64 | 5 | powerPL700/1650d | CON-800V1750A | FP1650 | FANSUPPLY5 |
| 1100 | 1750 | 64 | 5 | powerPL800/1750d | CON-800V2000A | FP1750 | FANSUPPLY5 |
| 1200 | 1950 | 64 | 5 | powerPL900/1950d | CON-800V2000A | FP1950 | FANSUPPLY5 |



Size 4 powerPL/X315 - 400

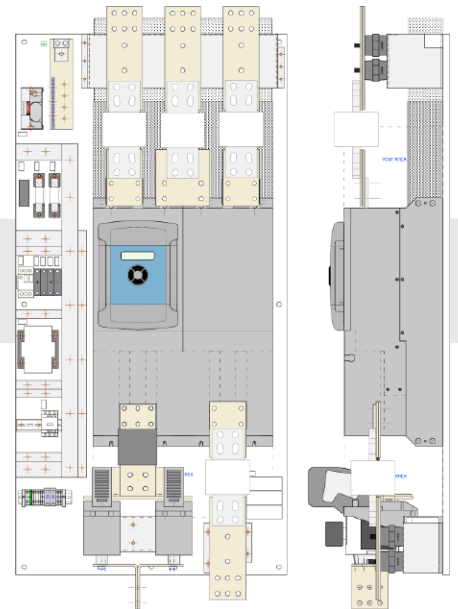
NOTE 1:

To encourage "doors closed", safe start up & maintenance practices, all suffix d PL/X drives are fitted with a *dw221 speedy* with isolated USB and Ethernet ports as standard for full remote configuration & control access.

NOTE 2:

Due to the weight and dimensions, size 5 powerDRIVES are shipped in two parts (basic drive & power package panel) that will need to be assembled on site

| Frame 4 Dimensions | | | |
|--------------------|-------|-------|-------|
| Drive | OH | OW | OD |
| powerPL275 | 53.0" | 18.5" | 14.9" |
| powerPLX275 | 53.0" | 18.5" | 14.9" |
| powerPL315 | 56.0" | 18.5" | 16.0" |
| powerPLX315 | 56.0" | 19.3" | 16.0" |
| powerPL360 | 60.0" | 18.5" | 16.9" |
| powerPLX360 | 60.0" | 19.3" | 16.9" |
| powerPL400 | 60.0" | 18.5" | 16.9" |
| powerPLX400 | 63.9" | 19.3" | 16.9" |
| Frame 5 Dimensions | | | |
| All frame 5 drives | 67.0" | 30.0" | 16.0" |



Size 5 powerPL/X520 - 900

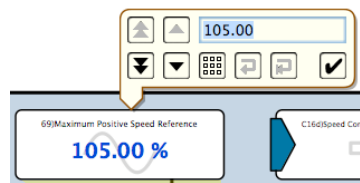
PLXDd Separate Stack Controller

The PLXDd is a great retrofit option for controlling large separate SCR stacks in either 6 or 12-pulse DC drive configurations and also for wound rotor motor SCR stack control. The unit has all the standard PL/X series drive features together with:

- Available for stacks up to 690 volts AC, 700 volts DC
 - Built-in 32 amps fully automatic field controller (optional 50 amps rating)
 - Separate gate pulse driver unit for greater noise immunity and reliability
 - Ethernet and *drive.web* distributed control
 - Optional current transformers
- Please call for details



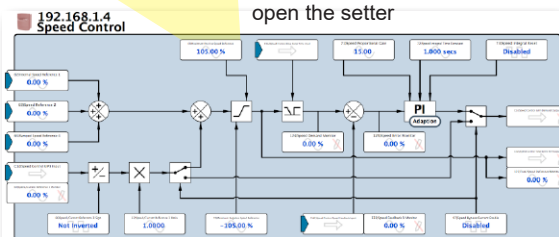
savvy tools for the PL/X DC drives



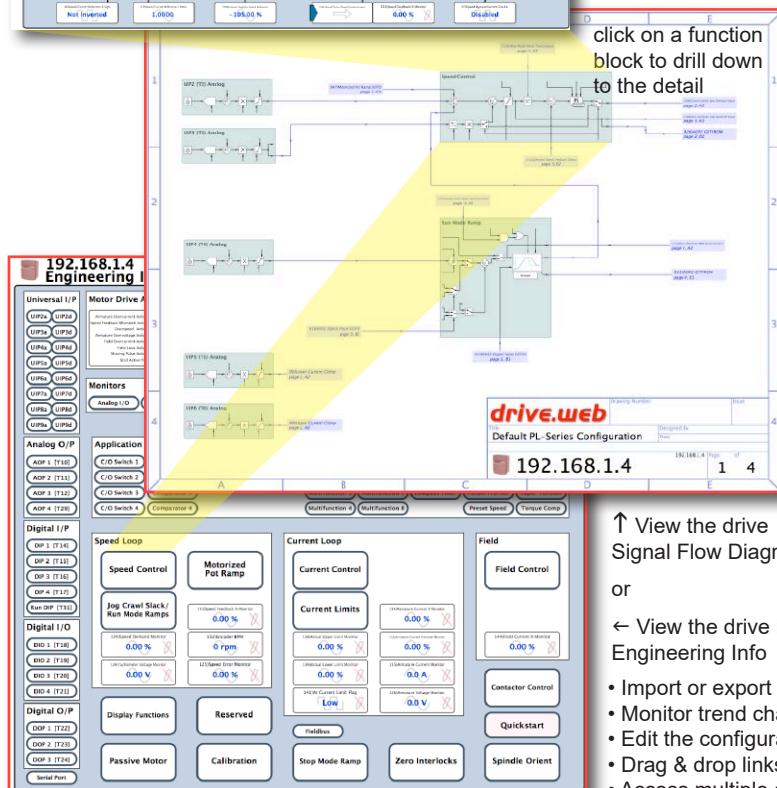
drive.web automation

- Intuitive
- Easy
- Reliable
- Very smart!

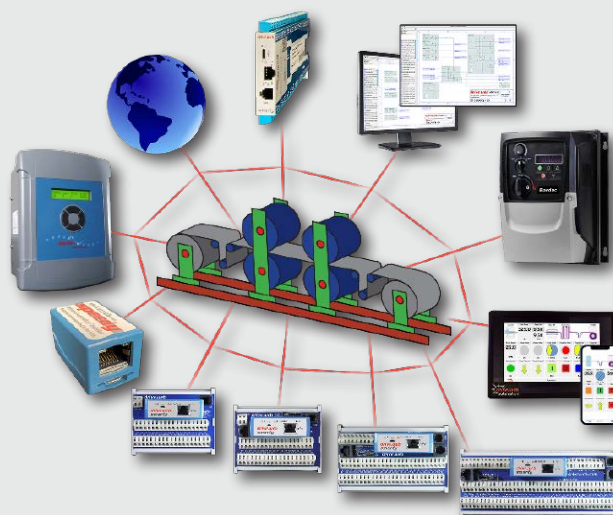
click on a parameter to open the setter



click on a function block to drill down to the detail



drive.web smart drives



Add a **drive.web** module to any drive for unlimited automation capability:

- Powerful programmable control functions
- Peer-to-peer networking over Ethernet
- Smart iPad/Android or touch screen PC operation
- Internet access

smarty - adds programmable control & extra I/O
speedy - adds programmable control & gateway

- Get clear graphical signal flow system diagrams.
- Send event driven emails from your drive.
- All in one unique, intuitive, environment.

powerSL Series

Analog DC drives - up to 200HP

powerSLX Regen, reversing drive + field controller

powerSL Non-reversing drive + field controller

powerSLE Non-reversing OEM drive.

Please call for details



Power Quality For DC Drives

Drive Isolation Transformers

Standard specification:

NEMA 1 enclosed for indoor use
K-factor 4

Windings: Delta Primary, Wye Secondary
Aluminum or Copper windings as indicated
Taps at $\pm 5\%$
Approvals: UL, cUL

Options

Outdoor enclosures
Frequencies other than 60Hz
Voltages other than 230/460/575 pri, 230/460 sec
Special Taps
Fungus Proofing
80°C & 115°C Rise
Copper Windings
Electrostatic Shield
K-13, K-20, K-30

Discount Schedule SX-1

Model

DIT3**
DIT6**
DIT11**
DIT14**
DIT20**
DIT27**
DIT34**
DIT40**
DIT51**
DIT63**
DIT75**
DIT93**
DIT118**
DIT145**
DIT175**
DIT220**
DIT275**
DIT330**
DIT440**
DIT550**
DIT660**

Specification

3KVA - Cu (2HP)
6KVA - Cu (5HP)
11KVA - Al (7.5HP)
14KVA - Al (10HP)
20KVA - Al (15HP)
27KVA - Al (20HP)
34KVA - Al (25HP)
40KVA - Al (30HP)
51KVA - Al (40HP)
63KVA - Al (50HP)
75KVA - Al (60HP)
93KVA - Al (75HP)
118KVA - Al (100HP)
145KVA - Al (125HP)
175KVA - Al (150HP)
220KVA - Al (200HP)
275KVA - Al (250HP)
330KVA - Al (300HP)
440KVA - Al (400HP)
550KVA - Al (500HP)
660KVA - Al (600HP)

Line Reactors For 3-Phase DC Drives

| Model Number | HP. at 230V | HP. at 460V | Arm Amps | Dimensions W x D x H | Mount Holes H x W | Weight LBS |
|--------------|-------------|-------------|----------|----------------------|-------------------|------------|
| LM18 | 5 | 10 | 20 | 6.0"x4.8"x3.1" | 2.1"x2.0" | 9 |
| LM37 | 10 | 20 | 41 | 7.2"x5.6"x3.4" | 2.3"x3.0" | 11 |
| LM52 | 15 | 30 | 58 | 7.2"x5.6"x3.8" | 2.6"x3.0" | 14 |
| LM67 | 20 | 40 | 75 | 9.0"x7.0"x4.8" | 3.2"x3.0" | 23 |
| LM82 | 25 | 50 | 91 | 9.0"x7.0"x4.8" | 3.2"x3.0" | 24 |
| LM120 | 35 | 75 | 133 | 10.8"x8.2"x5.6" | 3.5"x3.6" | 43 |
| LM150 | 40 | 100 | 166 | 10.8"x8.2"x5.6" | 3.5"x3.6" | 47 |
| LM195 | 60 | 125 | 216 | 9.0"x7.1"x4.9" | 3.2"x3.0" | 29 |
| LM240 | 75 | 150 | 266 | 10.8"x8.4"x5.8" | 3.2"x3.6" | 40 |
| LM300 | | 200 | 333 | 10.8"x8.4"x6.0" | 4.2"x3.6" | 48 |
| LM375 | 100 | 250 | 416 | 10.8"x8.2"x7.3" | 4.2"x3.6" | 68 |
| LM480 | 150 | 300 | 533 | 14.8"x14.0"x10.2" | 5.9"x4.6" | 125 |
| LM600 | | 400 | 666 | 15.5"x14.0"x11.5" | 6.8"x4.6" | 155 |
| LM750 | | 500 | 833 | 15.5"x14.0"x13.0" | 6.8"x4.6" | 180 |
| LM900 | | 600 | 1000 | 15.5"x14.0"x15.5" | 9.3"x4.6" | 290 |
| LM1125 | | 750 | 1250 | 22.0"x20.0"x14.8" | 9.5"x7.2" | 400 |

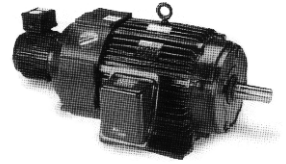
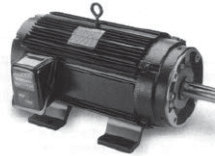
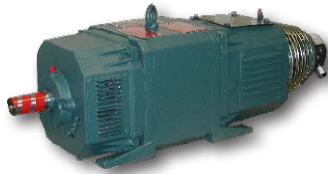
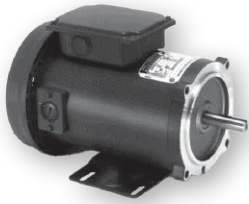
Line Filter



LF3 Line Filter

LF3-FK Line Filter Fuse Kit

Engineering & Support



AC and DC motors from fractional to over 2000 HP

All speed ranges, duties, enclosures and voltages complete with a full range of accessories such as encoders, tachs, thermal protection, brakes, blowers, filters, brushes and slide bases. Please call for details and competitive pricing.

Modulus Packaged Drives

Modulus solutions are a range of standard, pre-engineered drive packages with a selection of options for wide range common applications.

Using the flexible **drive.web** programmable automation technology it is possible to adapt a small range of hardware configurations to a wide range of applications thereby keeping design and manufacturing costs to a minimum.

Modulus drives are available either as packages mounted on an open panel, **Modulus P**, or as assemblies installed in an enclosure, **Modulus E**, to suit the type of operating environment and the control scheme required.

Every **Modulus** project is accompanied by a detailed, 50-point, Quality Control Report covering every facet of the product, its design, construction, testing and shipping.



User manuals for all products are available from www.bardac.com

Online Product Support

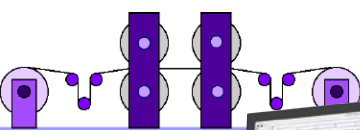
Using innovative, interactive, Internet online technologies we can provide either product training or product support through your browser from the comfort of your desk! Simply connect via your browser and get live interactive support where ever you are - with savvy running on your computer call +410-604-3400 and in less than a minute an engineer will be able to see your system live and give you the support you need.

... it's as easy as that!

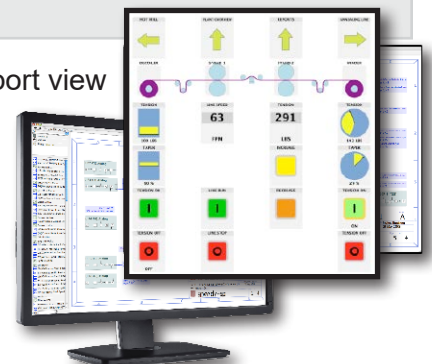
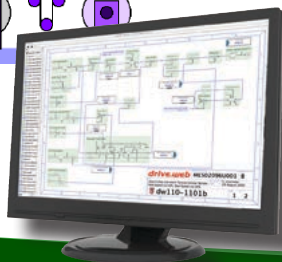
Our support view

Internet

Unbeatable!



Your plant view



Online Training

Online product training courses are scheduled every week with options for users of all levels of interest and ability.

Level 1 - drive.web introductory seminar - 1½ hours - Free!

This provides an overview of the **drive.web** automation technology. Learn how to connect to drives, create drive “phantoms”, navigate systems, create signal flow diagrams and system drawings, find information, identify object attributes, make connections, show trend charts, build **savvyPanel** operator stations, etc.

Level 2 - drive.web design technology course - 3 hours (Level 1 is a prerequisite)

Covers configuration of drives, basic system design concepts, Ethernet networking, password protection, system safety

Level 3 - drive.web system design and application courses (Level 2 is a prerequisite)

3a) Drive and device interfaces - 2 hours

Covers the use of “Templates” and “Helpers” for documented drives, generic ModbusRTU master interfaces to third party drives, operator stations, etc.

3b) Winder Control Systems - 3 hours

Covers standard solutions for open loop CTCW winders, closed loop dancer controlled winders and closed loop load cell controlled winders.

3c) Encoder Control Systems - 3 hours

Covers applications such as “electronic line shaft”, spindle orientation, registration and position control.

3d) Advanced Ethernet, Internet Access and Security - 3 hours

Covers local and wide area network configuration, IP addressing, user access and device and system password protection.

For course details, registration, international training options and charges please call us at 1-888-667-7333 (toll free USA 888-ON SPEED) or international at +410-604-3400. Alternatively please contact training@driveweb.com

Terms of Sale & Payment

Complete Terms & Conditions of Sale are shown at www.bardac.com. Net 30 day credit terms are available subject to prior approval. Credit card payments are only accepted for payments made at the time of service or shipment of products and will be subject to a 4% surcharge.

Field Service, Service Center Repair, Training and Start-up - Call +410-604-3400 Rates for the Continental United States

Charge Basis

Rates (US\$)

| | |
|--|------------------------|
| a. Basic Rate - Field Service, Training & Start-up Assistance - up to 8 hours daily Monday to Friday, 7am to 6pm | \$190 per hour |
| b. Standard Overtime - Weekdays 6pm to 7am & all day Saturday - Total work time not to exceed 12 hrs in any 24 hrs | \$285 per hour |
| c. Special Overtime - Sundays, Holidays and excess of 8 hours on Saturday | \$380 per hour |
| d. Overnight - Includes meals, and hotel accommodation | \$280 per night |
| e. Auto Travel - Covering cost of use of company or personal cars, distance to and from the local office | \$0.67 per mile |
| f. Public Transport - Rental cars, Air fares, etc. | At Cost |
| g. Holdover & Standby Time | Same as service |
| h. Travel Time - Time taken from Bardac to job site and return | Same as service |
| i. Basic Rate - Service Center Repair charges - Diagnosis & repair time | \$130 per hour + parts |
| j. Design or application engineering services | \$220 per hour |

Notes:

1. Minimum service billing is 4 hours for field services, 1 hour for service center services.
2. Parts, materials, special visas, duties, and extraordinary expenses will be charged extra.
3. Warranty credits will be identified on the Daily Field Service Report.

For rates and availability of sales and service outside the US, please call +410-604-3400

24/7 Tech Support

During normal business hours basic tech support will be provided free of charge

Outside normal business hours call +410-604-3535. Tech support will be provided at \$380/hour (minimum of 1/2 hour per call) and this must be paid for with a credit card at the time of service.

Bardac

drive.web

Bardac ...the safe bet!

Everything normally in stock!

Bardac Corporation

40 Log Canoe Circle
Stevensville, MD 21666 USA

bardac.com
driveweb.com
AutomationThings.com

Phone International +410-604-3400
Phone US Toll Free 1-888-667-7333
1-888-ON SPEED
Fax +410-604-3500

Catalog 2024.1



bardac.com

INDEX

600 Volts AC Drives 38, 41

A

AC Drives 34

- Closed Loop Vector 36
- General Purpose AC Drives 35, 42
- HVAC & Pump Drives 34, 40, 41
- NEMA 4X AC Drives 35, 44
- P2 Series Drives 34, 36-38
- E3 Series Drives 35, 42, 43
- Options 45
- Sensorless Vector Drives 35, 42, 43
- Single Phase Motor Drives 34, 46
- Vector Drives 34, 36

Application Notes

- Electronic Line Shaft 29
- Line Drive Coordination 29, 32
- Process Line Coordination 29, 30, 31
- Registration 29
- Winder Controls 28

Apps Packages 27, 29, 30, 32

Automation Technology 3-33

C

Cam Profile 30

Configuration Tools 8-11

D

DC Drives

- 3-phase Regen 52
- 3-phase System Drives 52
- Digital 52
- Single Phase 48, 49, 50
- Single Phase Enclosed 50
- Single-Phase Regen 49
- SL Series 57

Distributed Control 6

drive.web

- Application Solutions 27, 28, 29, 30, 32
- Concept 3, 4, 5
- Connectivity 4, 5
- Model Numbers 22, 23
- Products 7
- savvy software 9, 10, 11, 12, 13, 28-33
- smarty dw250 14, 18
- smarty dw240 15, 16, 17, 18
- smarty dw210 18, 24
- speedy 20, 24
- Systems 4, 5, 6

drive.web Automation 3-33

drive.web controllers 14-25

drive.web Line Control 29, 32

E

E3 Series Drives 42

E3 Series Single Phase Drives 46

ECO Drives 39

Electronic Line Shaft 29

Email Function Block 33

Energy Efficient Drives 39

Engineered Apps 26, 27

F

Fan & pump drives 40

600 Volts Drives 41

Field Service 59

Flux Vector Drives 34, 36

Frequency I/O 14, 23

G

General Purpose VFDs 35, 42

Get savvy download 9

H

HVAC drives 40

600 Volts Drives 41

I

iOS, iPad, iPhone

savvyPanel 13

K

K Series DC Drives 48

L

Line Reactors 57

M

Modulus

Enclosed Drive Systems 58

Modulus Packaged Drive Systems 58

Motion Control 30, 31

Cam Profile 30

Stepper Drive Control 31

Trapezoidal Motion 30

Motors, AC 58

Motors, DC 58

N

NEMA 4X drives 44

NEMA 12 drives 36, 39

O

Online Support 58

Open Loop Vector Drives 36

Operator Station

savvyPanel 12

P

P2 Series Drives 36

Packaged Modulus Drive Systems 58

PL/X Series Digital DC Drives 52

Power Quality 57

Process Line Coordination 29, 30, 31

Programming Tools 12

Pump drives 40

R

Regenerative Drives

Digital DC 52

Registration Control 29

S

savvyPanel Touch Screens 12

savvy programming 11

savvy-SFD Signal Flow Diagram 10

savvy software 9, 10, 11, 12, 13, 28-33

savvy software download 9

Sensorless Vector Drives 36, 42, 43

Service 54, 59

Service Charges 59

Servo Drives 41

smarty Controller 14, 15, 16, 17, 18, 19

speedy Controller 20, 21

Stepper Drive Control 31, 33

System Design Tools 7-11

Systems 6, 58

T

Temperature Control 27

Terms Sale & Payment 59

Training Seminars 59

Transformers, Drive Isolating 57

Trapezoidal Motion 30

V

V3 Energy Efficient 39

Variable Torque Drives 40

Vector Drives 36

600 Volts Drives 38, 40

W

WiFi Roaming 33

Winder Controls 28

drive.web smarty

Dancer controlled 28

Load cell controlled 28

Open loop CTCW 28