

# **Bardac Drives Catalog 2017**

*issue 1*

***Automation Things***

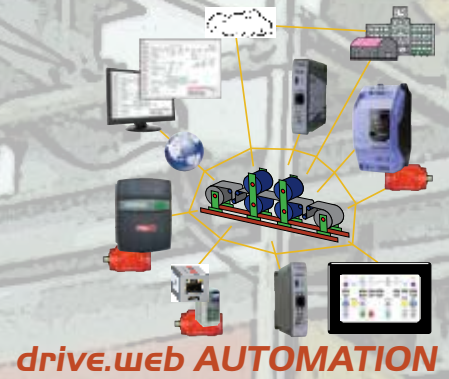
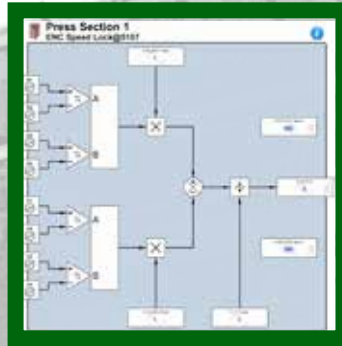
***Smart devices***

***Internet accessible***

***Ethernet, peer-to-peer***

***Configurable from anywhere***

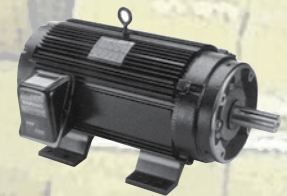
***Everything normally in stock!***



**AC DRIVES**



**DC DRIVES**



**MOTORS**



**SERVICE**

# savvyPanel touch

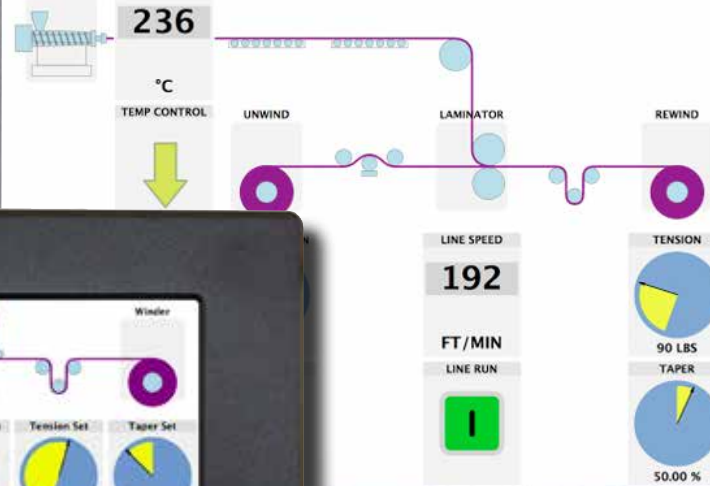
Color  
Touch  
Screens



5" - 800 x 480p, 150 x 110 mm



7" - 1024 x 600p, 206 x 139 mm



9.7" - 1024 x 768p, 525 x 205 mm

- Plug & Play, **drive.web** native
- Splashproof front
- Competitively priced.
- Easy set up.
- Crisp, high visibility graphics

- IP65, NEMA 4 splashproof front
- IP20 rear
- 1, Ethernet port 10/100baseTX
- Power supply 24VDC
- Working Temp: -20°C to 70°C

- Connect directly to any single **drive.web** device or to multiple devices with an Ethernet switch

## savvy programming

No separate **savvyPanel** programming required. The **savvyPanel touch** display configuration resides in the **drive.web** drives or automation controllers. Everything is set up and accessed from the **drive.web** network using the intuitive **savvy** tools.

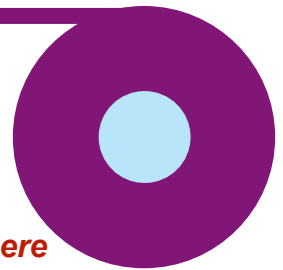
### enclosure for savvyPanel touch, 5" & 7"

- Impact resistant, flame retardant, polycarbonate industrial enclosure
- NEMA 4 (IP65), light gray.

Dimensions:  
5" model dwOPTION-54-050 7.9" x 4.75" x 3.0" (200x121x76 mm)  
7" model dwOPTION-54-070 9.5" x 6.3" x 3.6" (241x160x92 mm)



## savvyPanel app for iOS



**Go mobile**

**Get secure machine access anywhere**

**Try it out now!**

Download **savvyPanel** free from the Apple App Store and get immediate access to a real, live drive system in Stevensville, Maryland, USA.

- ♥ Touch the "Roll Change" button to reset the length to zero
- ♥ Turn on all the section "On/Off" switches
- ♥ Touch the "Line Start" button - see the line run its auto cycle.
- ♥ Touch the "Set Speed" indicator to change the line speed
  - ↳ Touch the parameter name to get info
  - ↳ Touch the square display symbol to close the setter